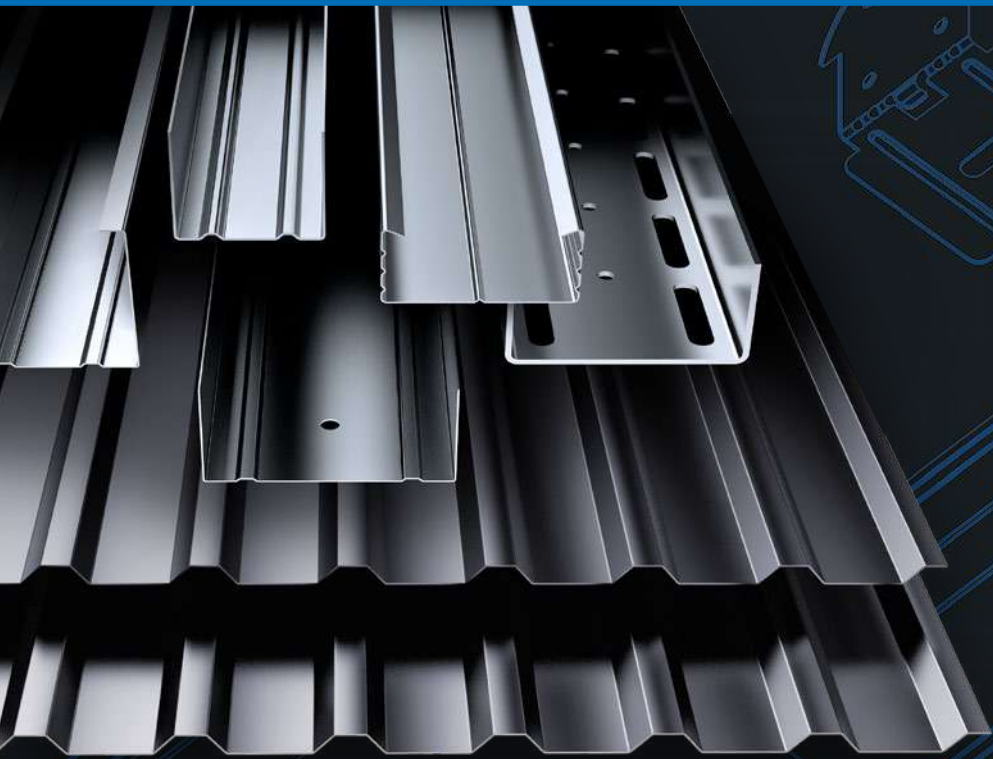


# VARIANT PROFILE PRODUCT CATALOGUE



# VARIANT PROFILE

## PRODUCT CATALOGUE

---

# ABOUT THE PRODUCTION COMPANY:



**VARIANT PROFILE -**  
TIME-TESTED!

**Variant Profile SRL** is a Romanian company and a part of a manufacturing corporation of 12 steel processing companies (from the development and manufacture of stamping and rolling equipment to the production of steel structures of various complexity). The headquarters and manufacturing facility of **Variant Profile SRL** are located in **Bucharest** and plant in **Targu Jiu, Romania**.

**Production facilities:**

The company's equipment provides means to create the necessary elements as accurately and reliably as possible, with the highest quality. All products are manufactured using modern equipment, have the necessary quality certificates and meet the requirements of DSTU. The Production Quality Management System is ISO 9001:2015 certified. Having our own production allows us to control the quality of products and be confident about it.

**Main business areas:**

- production of wall and roofing corrugated sheet made of galvanized steel and polymer coated steel;
- durable, cost-effective and strong Industry Steel Tile;
- a range of additional roof elements for corrugated sheet and steel tile, both standard and customized non-standard Accessories are available;
- production of high-quality steel profile for plasterboard systems, as well as all related equipment;
- reinforcing profile for windows systems REHAU, KBE, ALUPLUST, SALAMANDER, VEKA, WDS, WINTECH, etc.;
- accessories for PVC window systems: anchor plates for all types of profile and Z bracket for attaching the window sill to the window frame;
- mounting tape and perforated tape.

**Company advantages:**

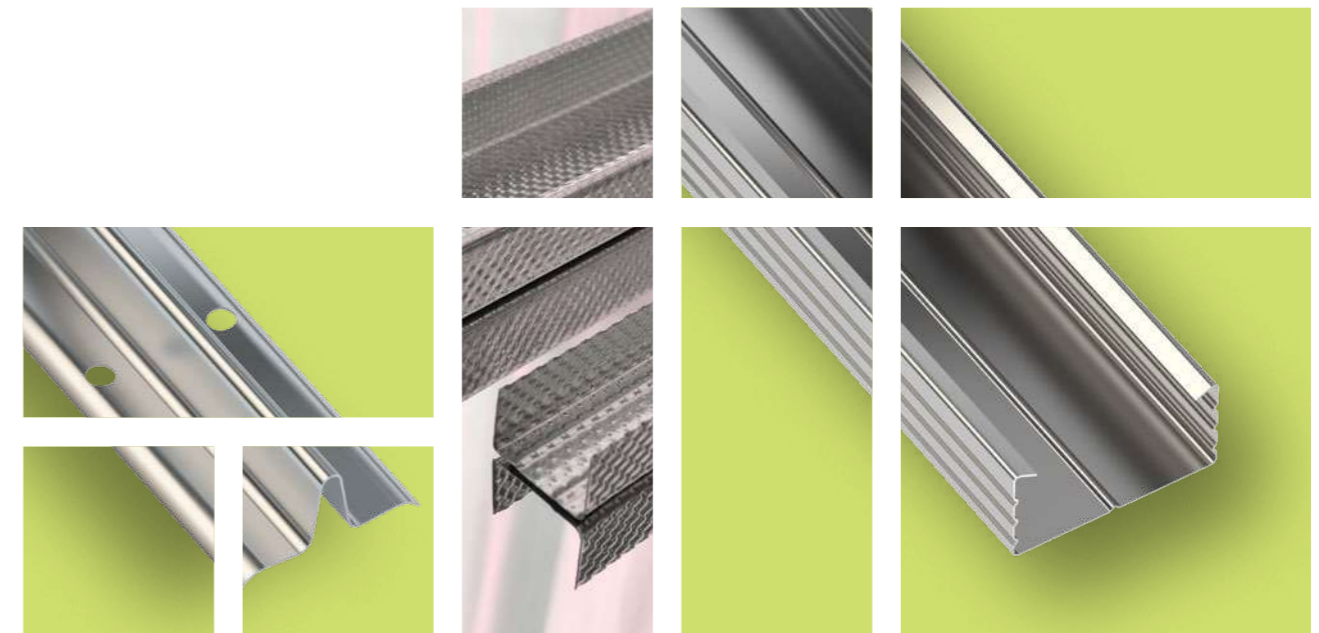
- we have our own production facilities and a large staff;
- products undergo quality control system;
- we have high design potential,
- producing custom products, and constantly expand the range of our products;
- we offer complex solutions and individual partnership programs;
- we offer products at factory prices.

The priorities of **Variant Profile SRL** in its work include customer focus and maximum satisfaction of customer's needs. We are always open and look forward to new partners, new ideas, new projects!

# CONTENTS

<b>PROFILES FOR PLASTERBOARD SYSTEMS</b> .....	<b>5</b>
CD-60 Profile .....	6
UD-27 PROFILE .....	7
RACK PROFILE CW .....	8
GUIDING PROFILE UW .....	9
Screed Profile .....	10
Profile for Window slopes .....	10
<b>PROFILE ACCESSORIES</b> .....	<b>11</b>
Quick Suspension: Anchor Hanger .....	12
Quick Suspension: Double Spring «Butterfly» .....	13
Quick Suspension: Loop Rod and Hook .....	13
UA REINFORCED PROFILE AND MOUNTING ANGLES .....	14
Brackets and Connectors: CD Connector .....	16
Brackets and Connectors: CD Side Connector .....	17
Brackets and Connectors: Single-Level Connector «Crab» .....	18
Brackets and Connectors: Two-Level Connector .....	19
U-shaped brackets: Universal Direct Suspension .....	20
<b>MOUNTING TAPE. PERFORATED TAPE</b> .....	<b>22</b>
<b>REINFORCING PROFILE FOR PVC WINDOWS</b> .....	<b>25</b>
<b>MOUNTING ANCHOR PLATE</b> .....	<b>29</b>
<b>CORRUGATED SHEET</b> .....	<b>33</b>
Table of Standard Colors for Polymer Coating .....	34
Corrugated Sheet PS-8 .....	35
Corrugated Sheet PS/PK-10 .....	36
Corrugated Sheet PS/PK-20 .....	37
Corrugated Sheet PK-35 .....	38
Corrugated Sheet PK-44 .....	39
Corrugated Sheet PK-57 .....	40
<b>STEEL TILE</b> .....	<b>41</b>
<b>ACCESSORIES FOR CORRUGATED SHEET AND STEEL TILE</b> .....	<b>43</b>

# PROFILES FOR PLASTERBOARD SYSTEMS



### Types of profiles for plasterboard systems depend on their use:

- ceiling channel profiles – CD;
- ceiling perimeter profiles — UD;
- wall partition track profiles — UW;
- supporting studs — CW;
- reinforced profile — UA.

We offer all types of profiles with a thickness up to 0.65 mm.

### Advantages of our profiles:

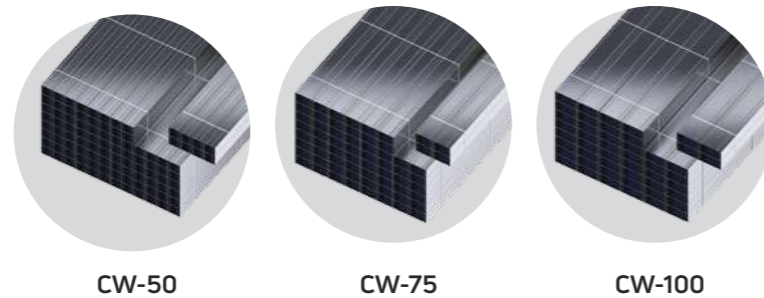
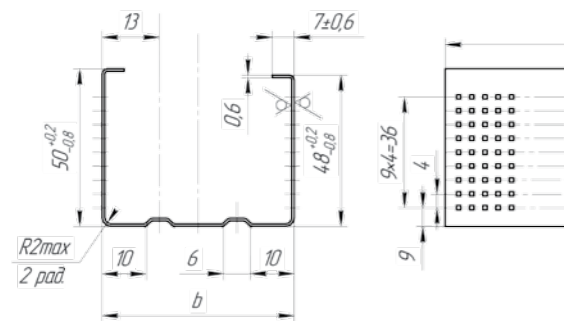
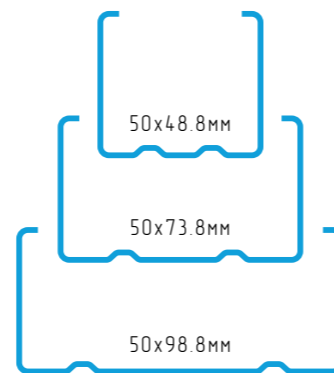
- Quality Management System certified according to ISO 9001:2015;
- profile has a Certificate of Conformity;
- Sanitary Certificate;
- raw materials are high in Zn;
- complete set of accessories for profile mounting;
- two standard profile lengths — 3 and 4 meters;
- optional custom profile length;
- stiffeners to give rigidity to the structure;
- longitudinal stiffeners;
- application of any type of marking;
- high corrosion resistance and fire safety;
- we produce both plain and corrugated profile;
- we produce UA reinforced profile used to form a frame base and securing doorways in plasterboard structures;
- The CW profile has a special notch for running service ines;



# STUD CW



The CW profile is used as vertical studs when mounting plasterboard frames. The CW profile assembly is paired with the matching UW track profile. The size of the stud side provides a good connection with the track profile and guarantees a tight, gapless structure. Available profile thicknesses: 50 mm, 75 mm, 100 mm.



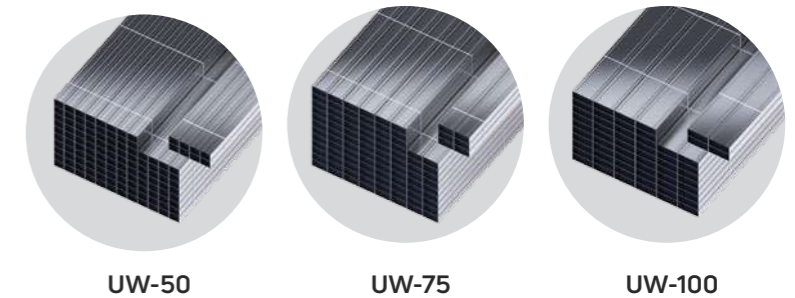
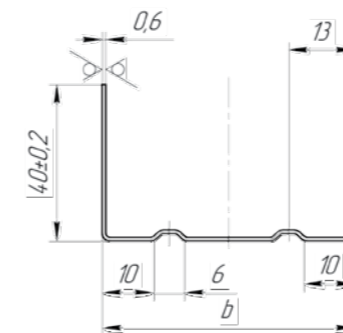
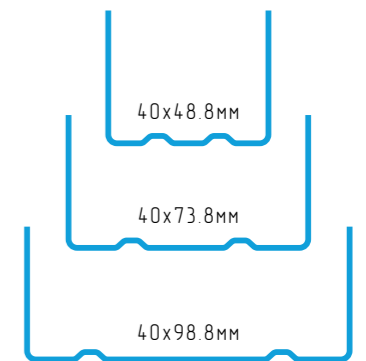
Item	Size, mm	Length, m	Quantity per package, pcs	Quantity per package, linear meters	Quantity per pallet, pcs	Quantity per pallet, linear meters	Quantity per pallet, packages
CW-50	50x50	3	16	48	192	576	12
		4	16	64	192	768	12
CW-75	75x50	3	8	24	128	384	16
		4	8	32	128	512	16
CW-100	100x50	3	8	24	96	288	12
		4	8	32	96	384	12

Produced in thicknesses: 0.4 to 0.6 mm

# TRACK PROFILE UW



The UW track profile is the basis for the stud profiles and is used as a crosspiece for the stud profiles when creating frames. Installation of the UW profile is paired with the matching CW stud. Available profile thicknesses: 50 mm, 75 mm, 100 mm.



Item	Size, mm	Length, m	Quantity per package, pcs	Quantity per package, linear meters	Quantity per pallet, pcs	Quantity per pallet, linear meters	Quantity per pallet, packages
UW-50	50x40	3	16	48	240	720	15
		4	16	64	240	960	15
UW-75	75x40	3	12	36	192	768	16
		4	12	48	192	768	16
UW-100	100x40	3	8	24	120	360	15
		4	8	32	120	480	15

Produced in thicknesses: 0.4 to 0.6 mm

# SCREED PROFILE

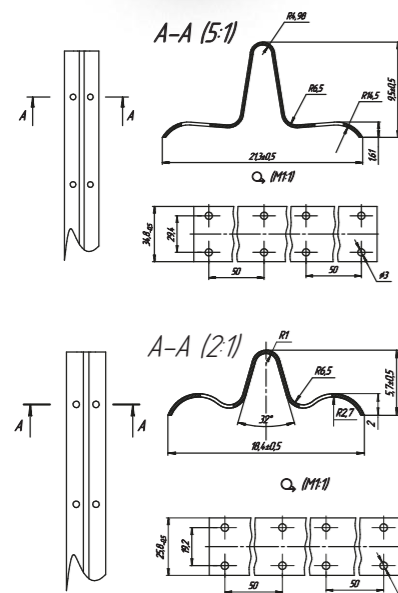


The screed profile (screed guide) is used as a supporting guide for plastering in order to obtain the most even surface. It has a deflection height of 10 mm and 6 mm.

With screed guided plaster, the curvature of the treated surface is reduced to a minimum. Experienced builders do not recommend removing such guides after the finishing work, as this can lead to unwanted cracks.

Screed guides with a deflection height of 10 mm allow for a plaster layer with a thickness of more than 1 cm, but guides with a deflection height of less than 6 mm are impractical for use during the room finishing.

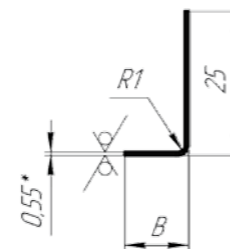
For fast and accurate level setting of screed profile when screening floors, plaster, etc., we offer Kremer mounts. The minimum mounting thickness allows the screed guide to be placed against the wall, and the position of the guide can be easily adjusted even after it has been installed.



Length, mm	Thickness, mm	Height, mm	Standard packaging, pcs
2500	0.25; 0.3; 0.35	6	25
3000	0.25; 0.3; 0.35	10	25

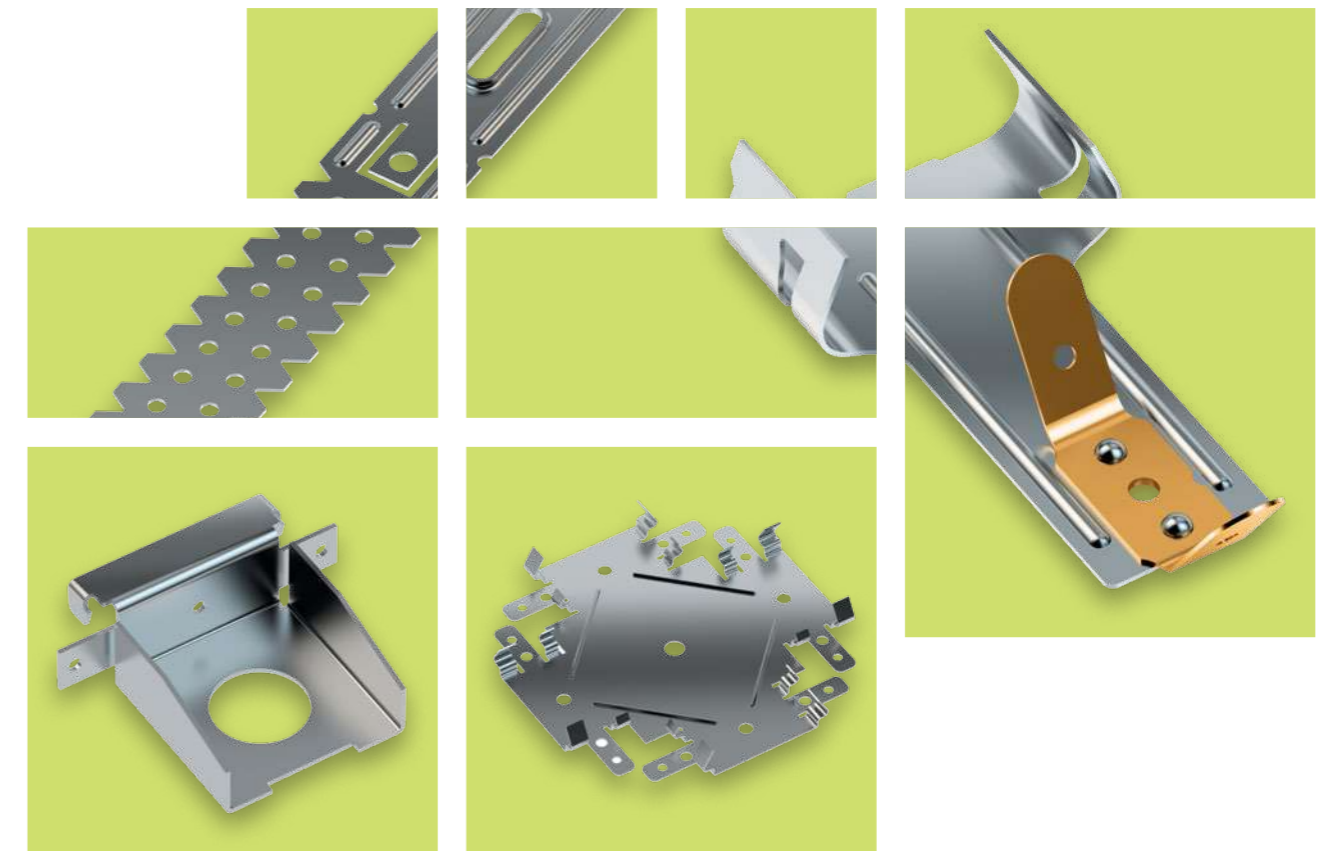


# PROFILE FOR WINDOW SLOPES



Length, mm	Thickness, mm	Standard packaging, pcs
2000	0.4; 0.6	20

# PROFILE ACCESSORIES

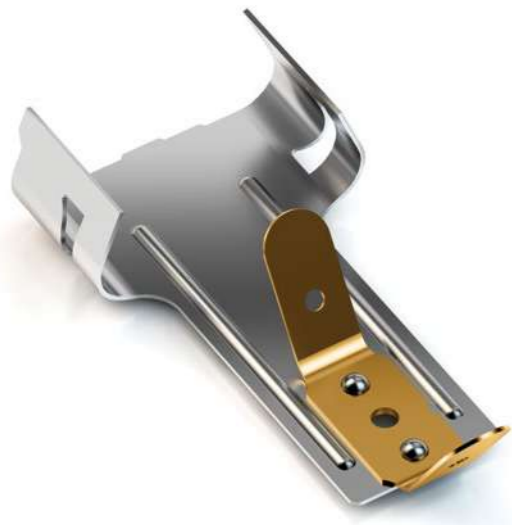


The frame requires connecting and mounting elements to erect partition walls, false ceilings and other plasterboard structures.

This means that you will need connectors, anchor hangers, universal mounts for profile mounting, hinges or hooks, and other construction aides.

We offer plasterboard mounting components that can be used to install any configuration. Production facilities and warehouses allow us to produce accessories in a wide range of thicknesses, from 0.5 mm to 1.5 mm.

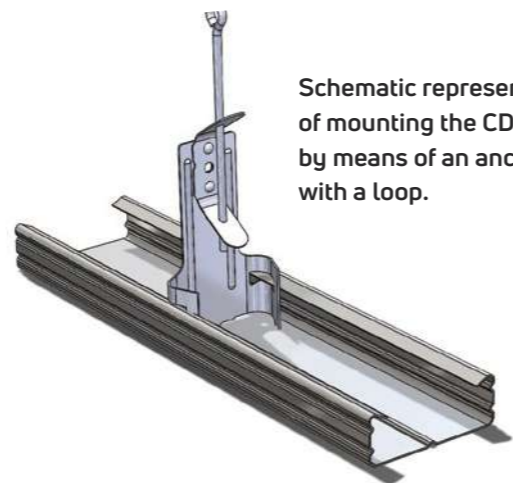
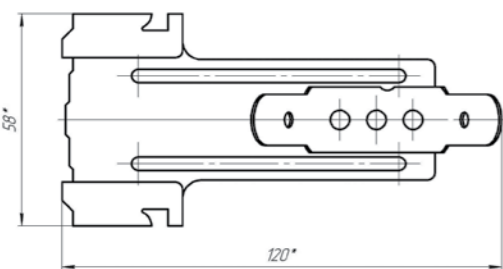
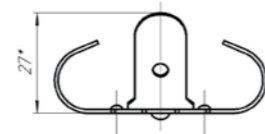
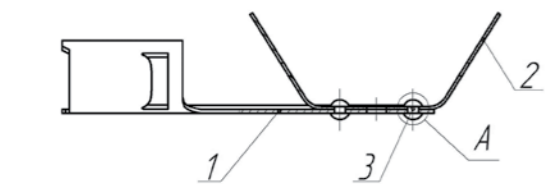
## QUICK SUSPENSION: ANCHOR HANGER



The anchor hanger for the CD-60 profile is intended for attaching profiles to load-bearing structures in plasterboard systems.

It is used as a suspended element of plasterboard ceiling systems based on CD-60 profiles. The anchor hanger consists of two parts: an anchor suspension with a clip (the «butterfly» spring mechanism made of 65G steel) and a rod. The extension rod is attached to the main ceiling in advance, using a metal dowel.

It is used when the ceiling level should be lowered by more than 125 mm.



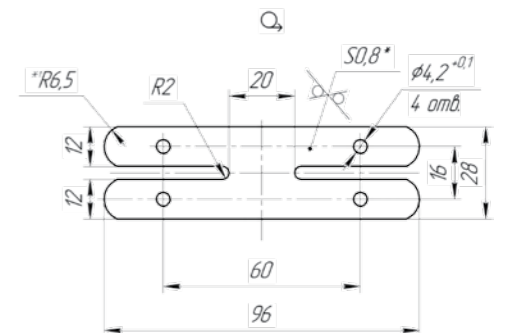
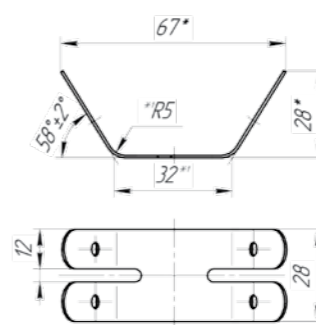
Schematic representation of mounting the CD profile by means of an anchor hanger with a loop.

It is produced in thicknesses from 0.7 mm to 0.9 mm  
Quantity per package: 50 pcs.

## QUICK SUSPENSION: DOUBLE SPRING “BUTTERFLY”

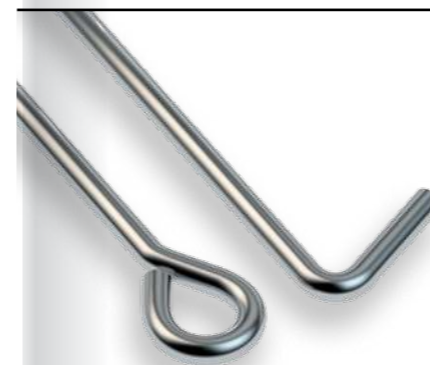


Produced in thickness: 0.8 mm  
(65 G steel) Quantity per package: 500 pcs.



«Butterfly» double spring is used for mounting suspended ceiling systems. It is used in conjunction with the rod to quickly adjust the height of the suspended ceiling relative to the main ceiling. The main features of this product are its durability, reliability, strength and ease of installation. It is resistant to mechanical abrasion and damage.

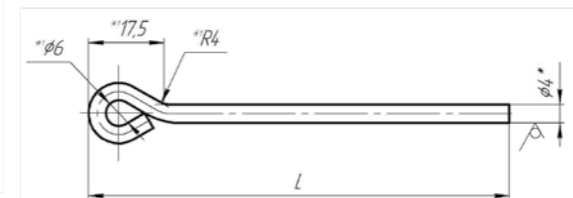
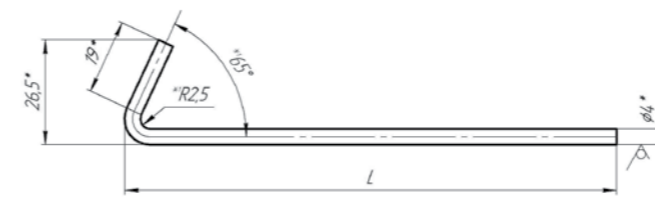
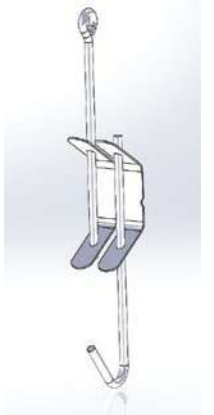
## QUICK SUSPENSION: LOOP ROD AND HOOK



The loop rods and hooks are used together with the spring suspension (butterfly), forming a single suspension system. The loop rod is required for installation of plasterboard false ceilings. It is used in conjunction with anchor suspension. The product is made in the form of a rod with an eye at one end, which

is used to attach to the ceiling. This part allows for high quality installation of ceiling structures.

Produced in lengths: 125 mm; 250 mm; 375 mm; 500 mm; 750 mm; 1000 mm; 2000 mm; 3000 mm  
Quantity per package: 100 pcs.





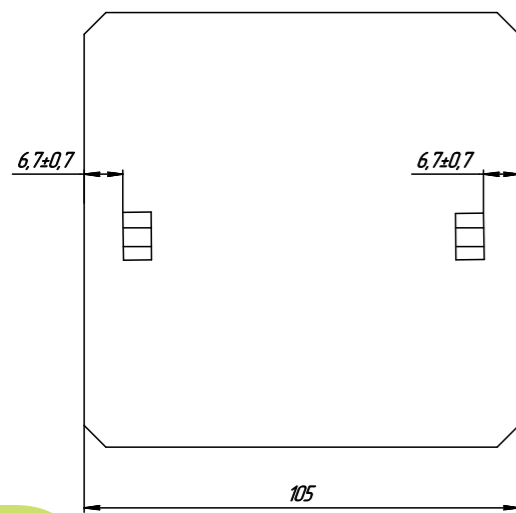
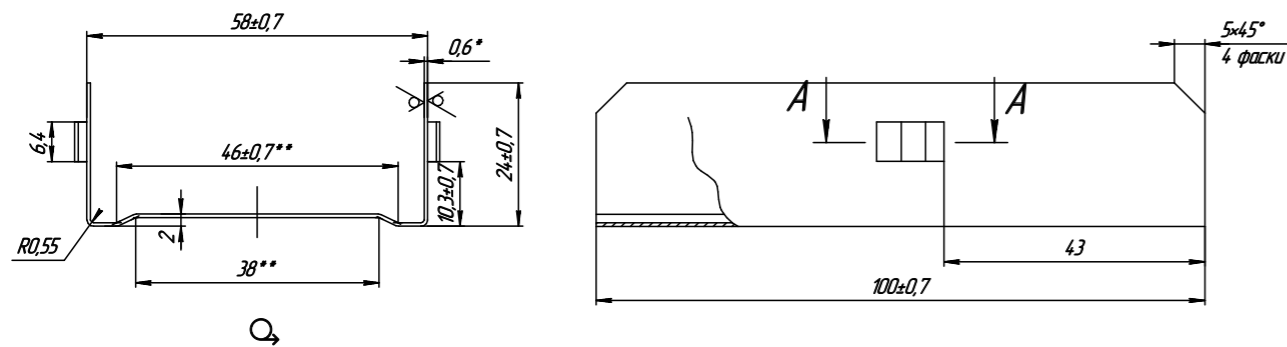
## BRACKETS AND CONNECTORS: CD CONNECTOR



The CD connector is designed to extend the length of the GD-60 load-bearing profiles. It is a key component when installing plasterboard ceilings in rooms with a large area.

The connector is mounted on the inside of the profile until it produces a characteristic click, which indicates that it is fully secured. This protects the structure from deflection as a whole or sagging of the plasterboard.

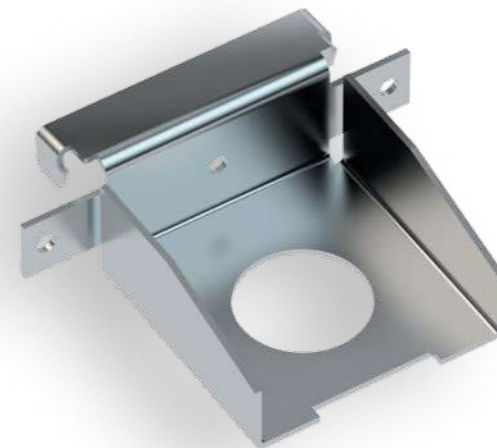
Produced in thicknesses: 0.4 mm; 0.6 mm  
Quantity per package: 100 pcs.



Schematic representation of a CD-60 profile connection with the help of a CD-connector.

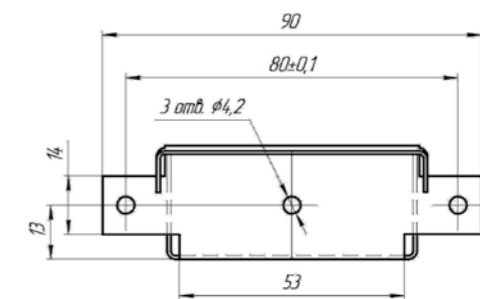
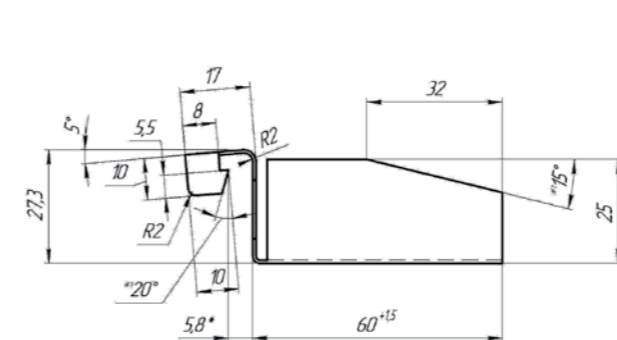


## BRACKETS AND CONNECTORS: SIDE CD CONNECTOR

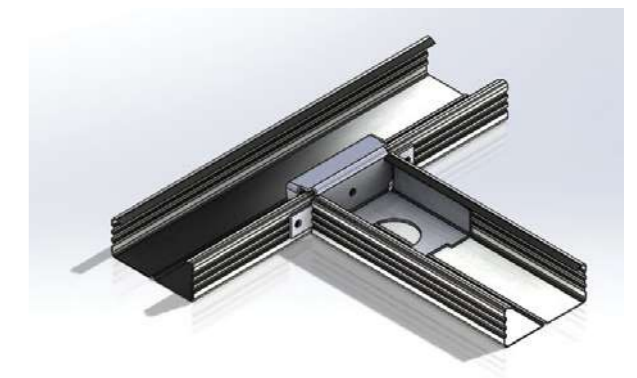
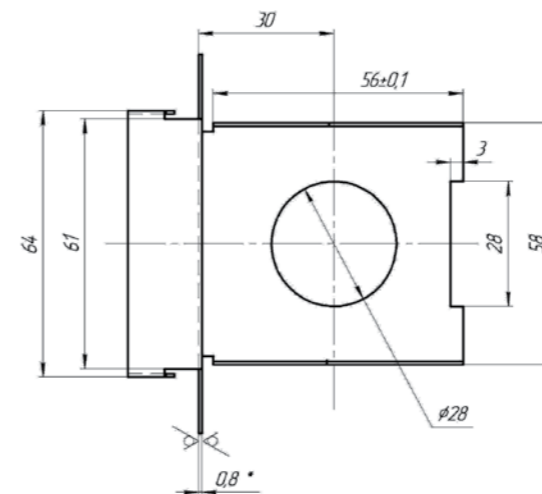


The side CD connector is used as the connecting element of the CD profiles for their T-joints at the same level when installing metal frames of suspended gypsum plasterboard ceilings. The connector is tightly attached to the CD profile with latching leaves, and then another metal frame profile is put on the one side in a T-shape. It is used to mount frames, which save effective height of the room, but at the same time are sufficiently rigid and reliable.

Produced in thicknesses: 0.4 mm; 0.6 mm  
Quantity per package: 50 pcs.



Schematic representation of a CD-60 profile connection with the help of a side CD connector.

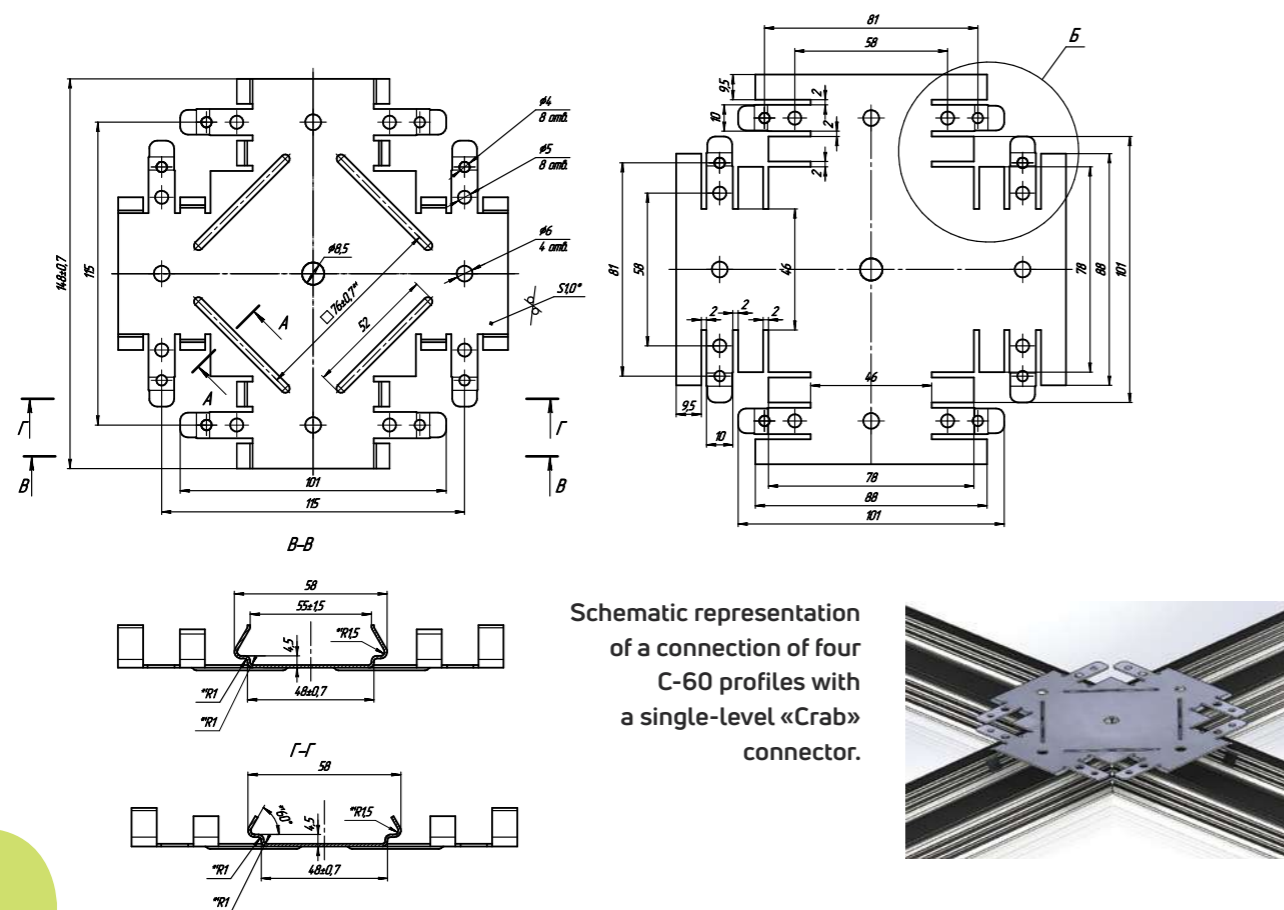


# BRACKETS AND CONNECTORS: SINGLE-LEVEL CONNECTOR “CRAB”

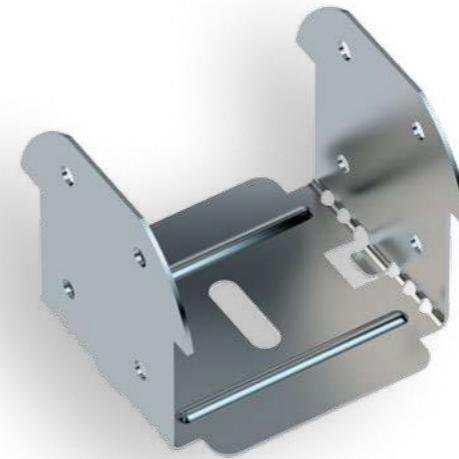


Produced in thicknesses: 0.5 mm to 1.0 mm  
Quantity per package: 25 pcs.

It is essential for installation of different partitions and construction of plasterboard indoor structures. The single-level «Crab» connector allows you to connect four profiles at the same height together. This part is key when installing a frame for suspended ceilings, especially when the ceiling is of irregular shape. The Crab connects the profiles that are at the same level and are secured perpendicularly. There are locks on each side of the Crab with holes for mounting on the profile flanges. The size of the connector varies depending on the thickness of the profiles to be joined.



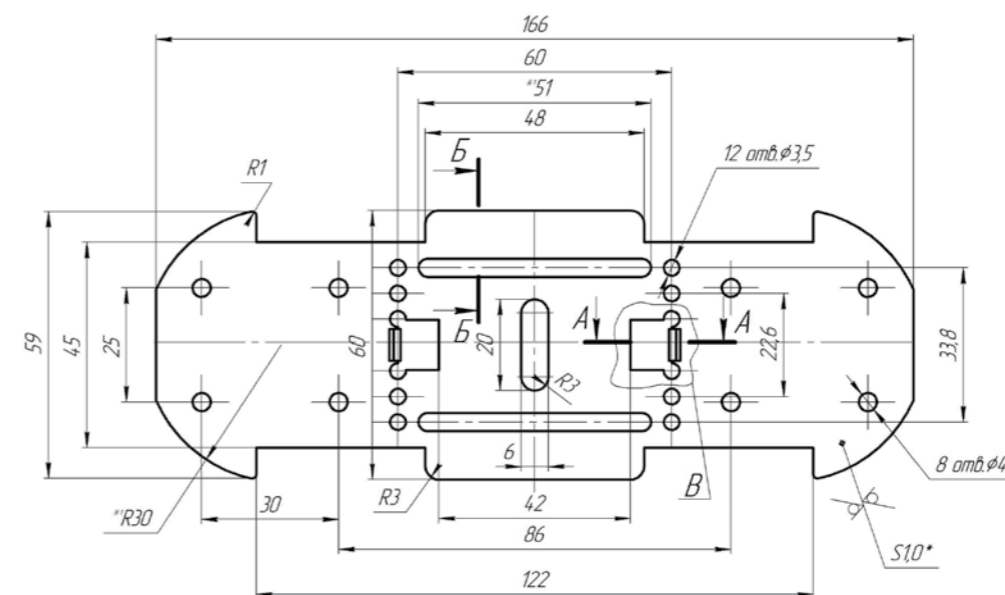
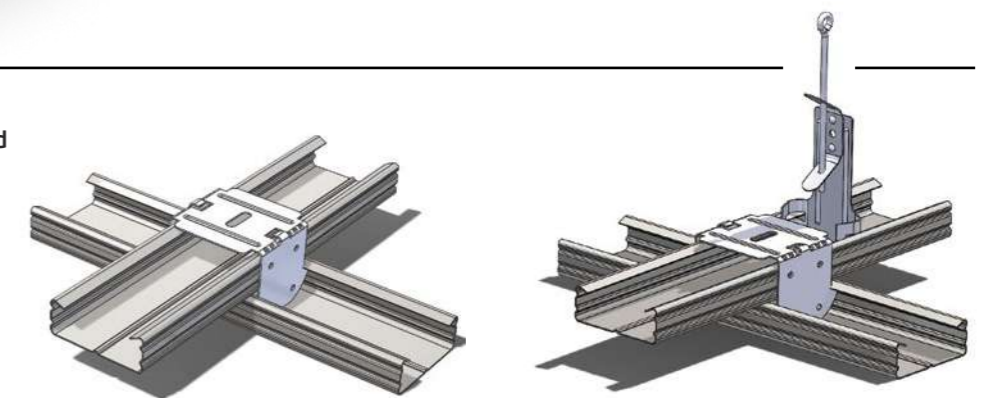
# BRACKETS AND CONNECTORS: TWO-LEVEL CONNECTOR



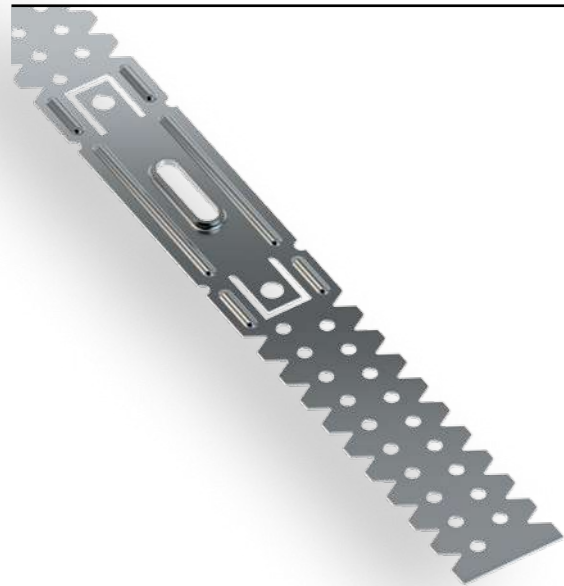
The two-level connector is intended for reliable joining of CD-60 plasterboard profiles at various levels perpendicularly. It is used for creation of multilevel designs of suspended plasterboard ceilings. The connector ensures the quality of installation on ceilings of large areas. The connector freely clings to the upper profile and locks tightly to the lower profile.

Produced in thicknesses: 0.7mm, 0.8mm and 0.9mm  
Quantity per package: 200 pcs.

Schematic representation of securing of a plasterboard profile with the help of a two-level connector.



# U-SHAPED BRACKETS: UNIVERSAL DIRECT SUSPENSION



The universal direct suspension is used for securing of plasterboard profiles in designs of false ceilings and in wall lining.

It minimizes the distance between the suspended ceiling and the main ceiling or the lining and the base wall. The direct suspension is supplied unfolded.

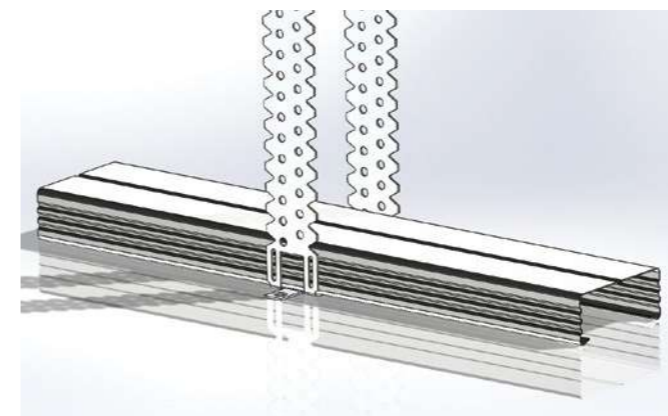
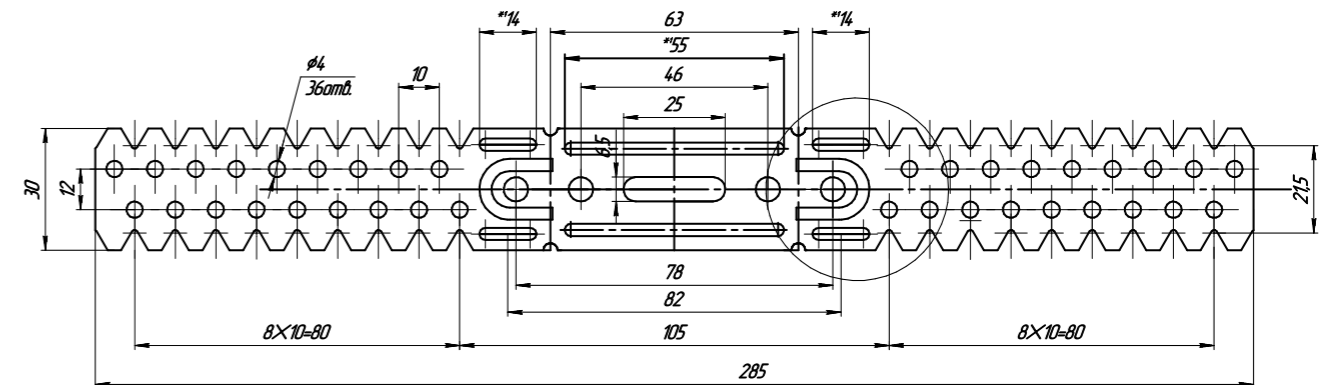
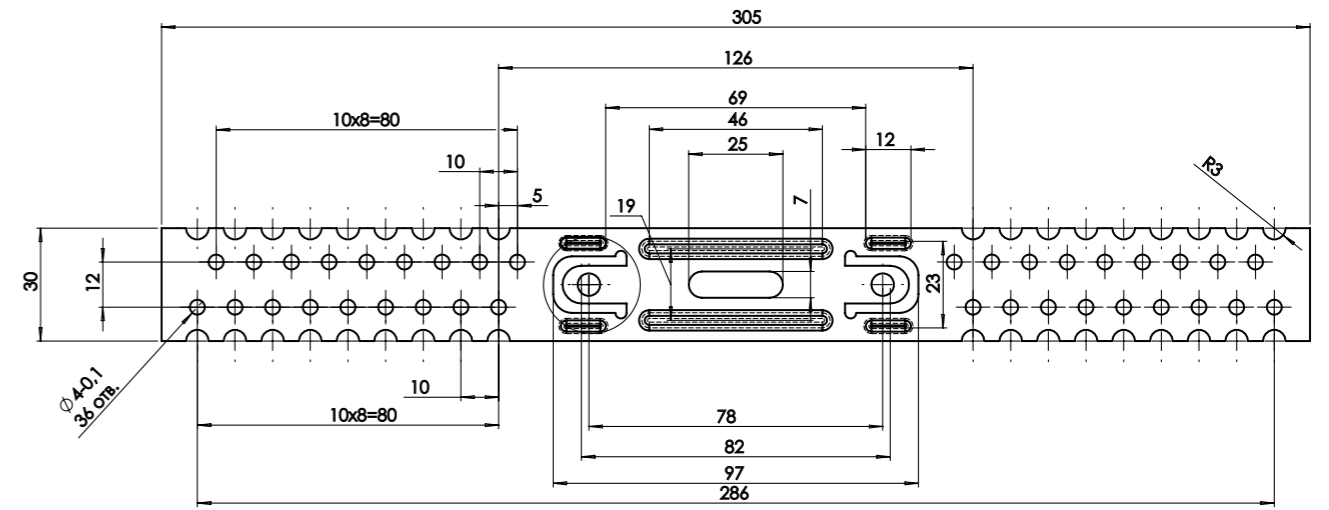
In the mounting position, it is a U-shaped component consisting of a support surface and two side strips. The support surface has additional stiffeners that provide stability to the suspension under load.

Each side strip of the suspension has two rows of openings with offset, which allow for quite precise leveling of frames of false ceilings or linings.

Direct suspensions may vary in shape and configuration, with the main requirement being to provide the necessary load-bearing capacity.

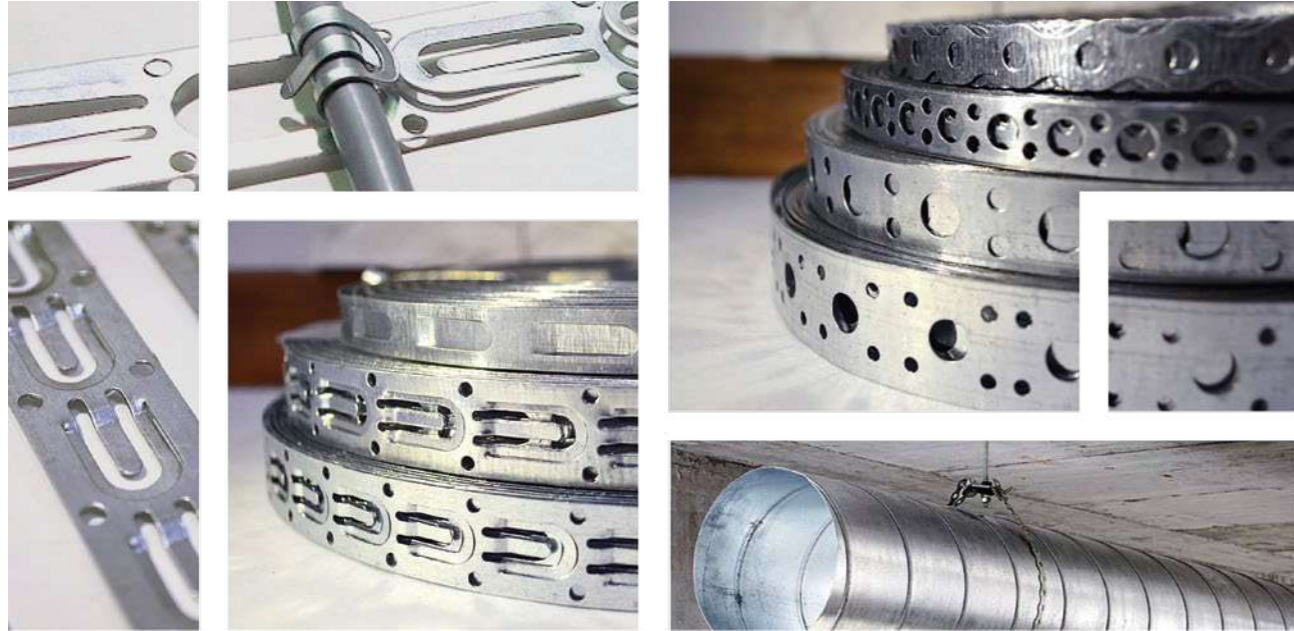
Item	50 pcs. package	100 pcs. package	0.5 mm	0.6 mm	0.7 mm	0.8 mm	0.9 mm	1.0 mm	1.1 mm	1.3 mm	1.5 mm
Universal Suspension 75		+	+	+	+	+					
Universal Suspension 117		+	+	+	+	+	+	+			
Universal Suspension 125		+	+	+	+	+	+	+			
Universal Suspension 170		+	+	+	+	+	+	+			
Universal Suspension 250		+	+	+	+	+	+	+			
Universal Suspension 350		+				+	+	+	+	+	+
Universal Suspension 470	+					+	+	+	+	+	+
Universal Suspension 650	+								+	+	

Thickness and packaging of the direct suspension.



Schematic representation of securing of a plasterboard profile by means of a direct suspension

# MOUNTING TAPE. PERFORATED TAPE



## MOUNTING TAPE.

The mounting tape is necessary for uniform cable layout on the surface of the base of the future heated floor. It comprises a metal strip with holes and clamps that make it easy to secure the heating element and reliably hold cables with a diameter of 5 to 9 mm.

The structure secures the heating cable in the lock, which eliminates its unexpected movement when the surface is filled and the heated parts collide, which can lead to cable malfunction.

The tape can be attached to the concrete floor with the help of 6x40 mm dowel nails. The tape can be secured to a wooden or metal base with self-tapping screws.

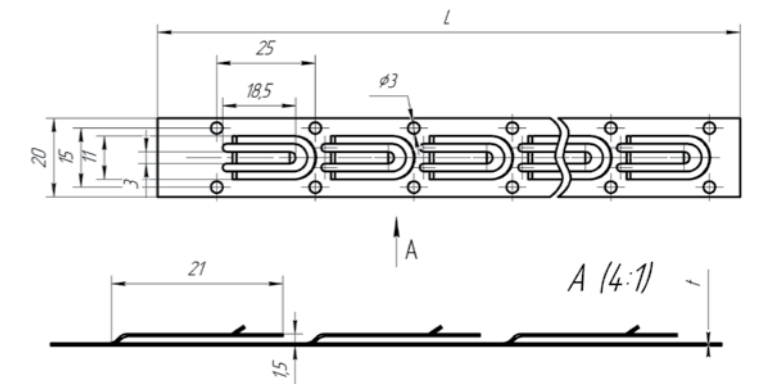
## PERFORATED TAPE.

The perforated tape is used for installation of ventilation systems, pipelines and air ducts, to securely fix the required structural elements. This tape can also be used to secure and strain any structures built in industrial facilities or residential buildings, which increases the load-bearing capacity of the attachment point significantly. There are holes along the whole length of the tape made to allow for the most adequate securing method. Depending on the purpose of the tape can be: Straight — for hanging low-weight cable lines or pipelines.

Corrugated — as a clamp for attaching air ducts and pipelines.

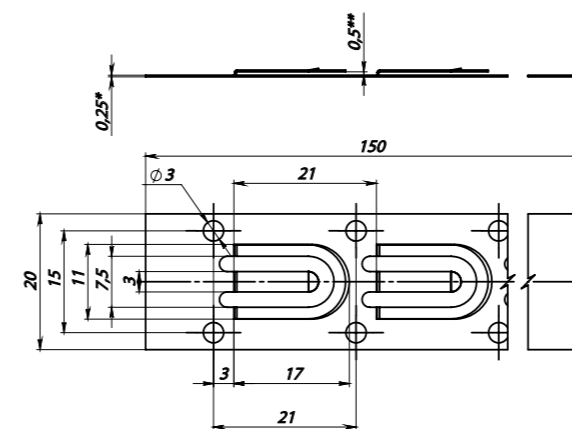
The versatility of the perforated tape is that it can be mounted with the help of any fasteners — screws, including self-tapping, nails or bolts.

# MOUNTING TAPE



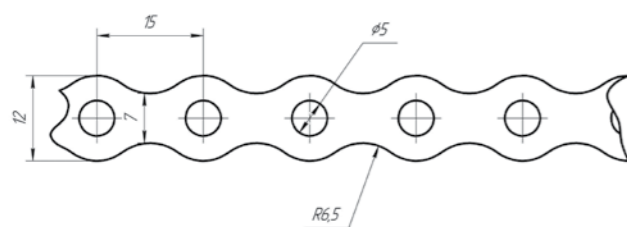
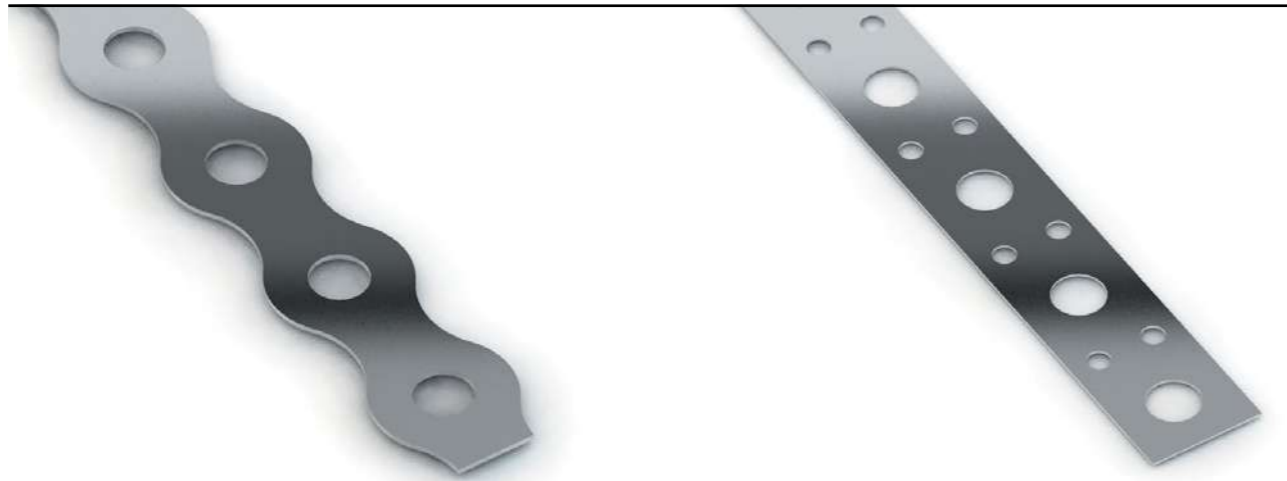
Mounting tape 20 mm, step 25

Mounting tape 20 mm, step 21

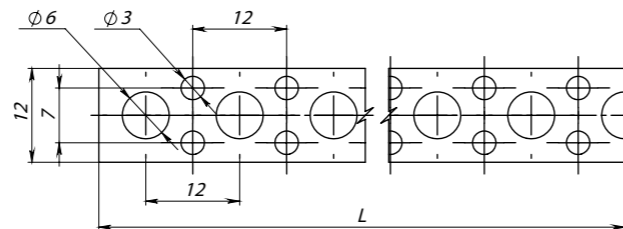


Tape Type	Mounting Tape	Perforated tape
galvanized steel	+	+
Width, mm	12 mm	+
	18 mm	+
	20 mm	+
	25 mm	+
Thickness, mm	0.5 mm	+
	0.6 mm	+
	0.7 mm	+
Length, mm	5 mm	+
	10 mm	+
	20 mm	+
Step, mm	20 mm	+
	21 mm	+
	25 mm	+

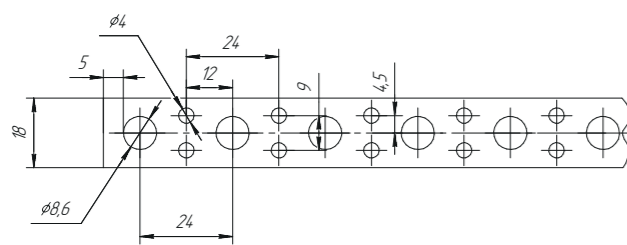
# PERFORATED TAPE



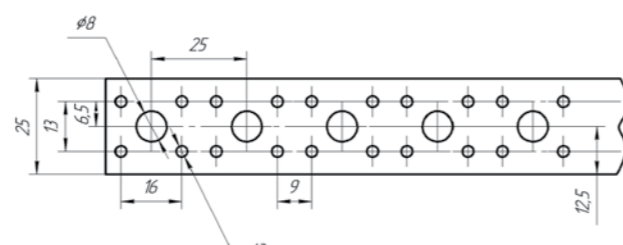
Perforated tape «Wave» 12 mm



Perforated tape 12 mm

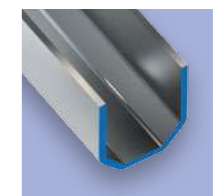
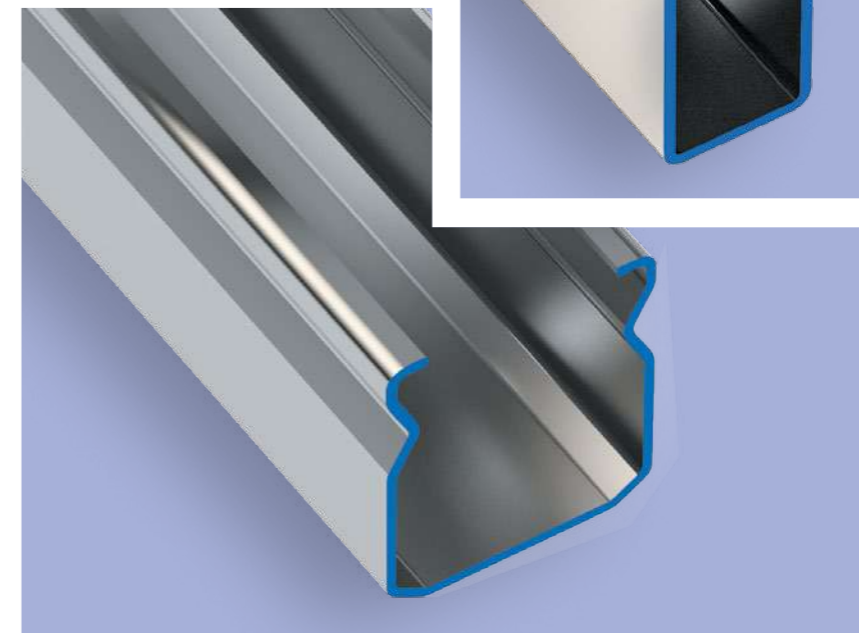
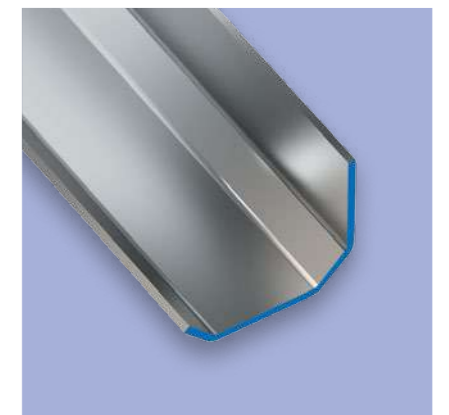
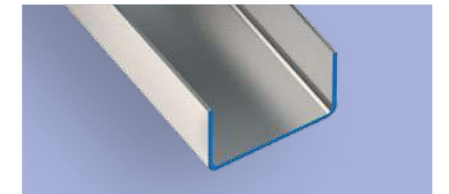
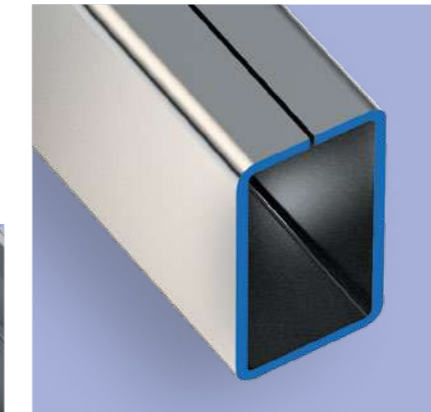
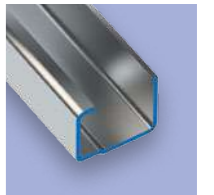


Perforated tape 18 mm



Perforated tape 25 mm

# REINFORCING PROFILE FOR PVC WINDOWS



**Variant Profile SRL** is a manufacturer of reinforcing profiles for window systems such as REHAU, KBE, ALUPLUST, SALAMANDER, VEKA, WDS, WINTECH, etc.

Reinforcing profiles are steel load-bearing elements that are installed in the inner chamber of PVC profiles and include steel galvanized elements of various section in the form of a closed loop. The reinforcing profile is used to strengthen the window profile, it is responsible for the most of the strength of PVC window and door units, and therefore for their reliability. The customer performance of the finished window structure depends on the quality of PVC profile reinforcement. This applies to both purely aesthetic aspects: surface evenness, absence of deformations and cracks, stability of linear dimensions,

and aspects that are important from the functional and practical points of view: proper performance of the structure, absence of sagging, reliable fixation in the hole, resistance to wind and shock.

#### Our advantages:

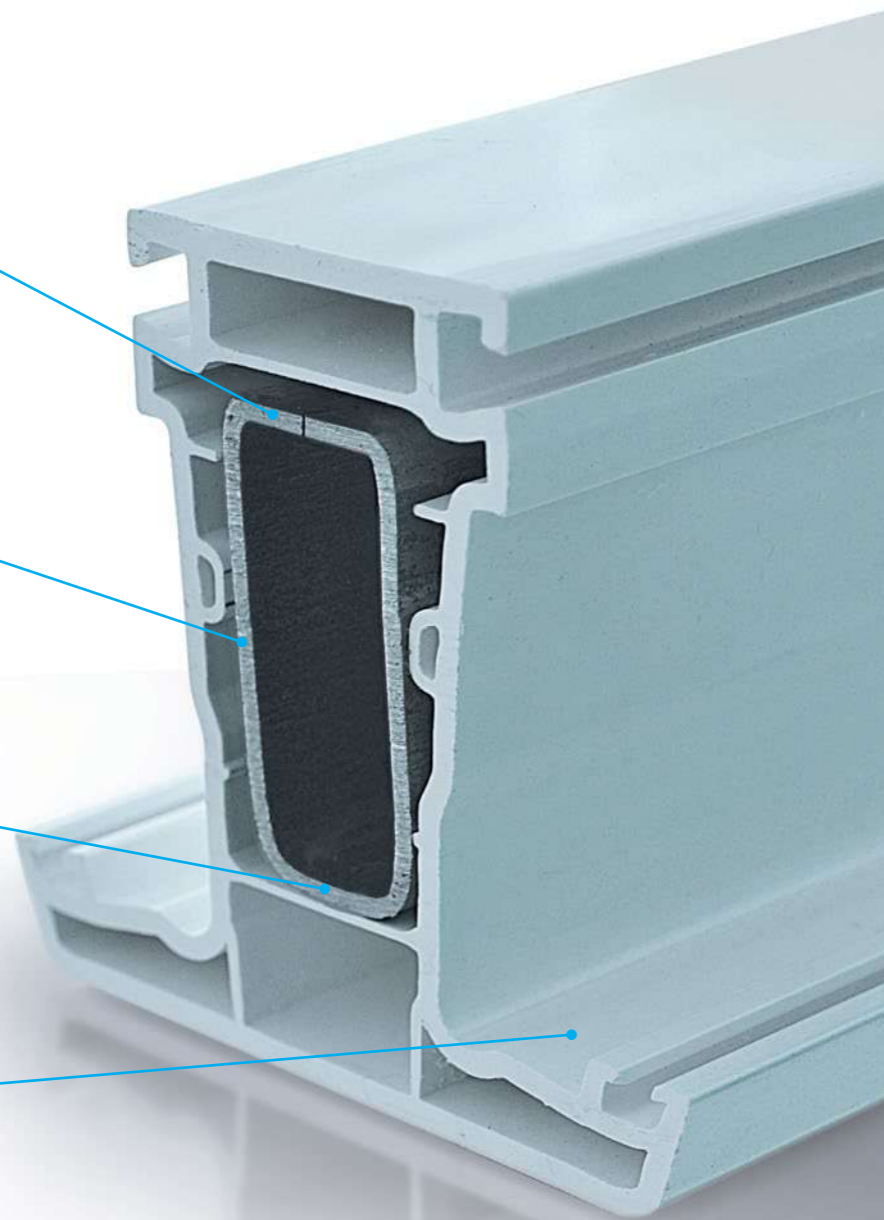
- new equipment without wear
- geometric parameters without deviations
- professional approach to each client
- readiness to expand the range of products, if necessary
- delivery of high-quality goods to your production facilities
- consultation of experts
- delivery to any region.

Large selection of profile configurations from standard to customized

Material used is galvanized steel as per DSTU 14913-80, 19904-90

Rolled steel with thickness from 0.9 to 2.0 mm, covered with a layer of zinc 140 g/sq m

Production of custom profiles up to 6 m long.

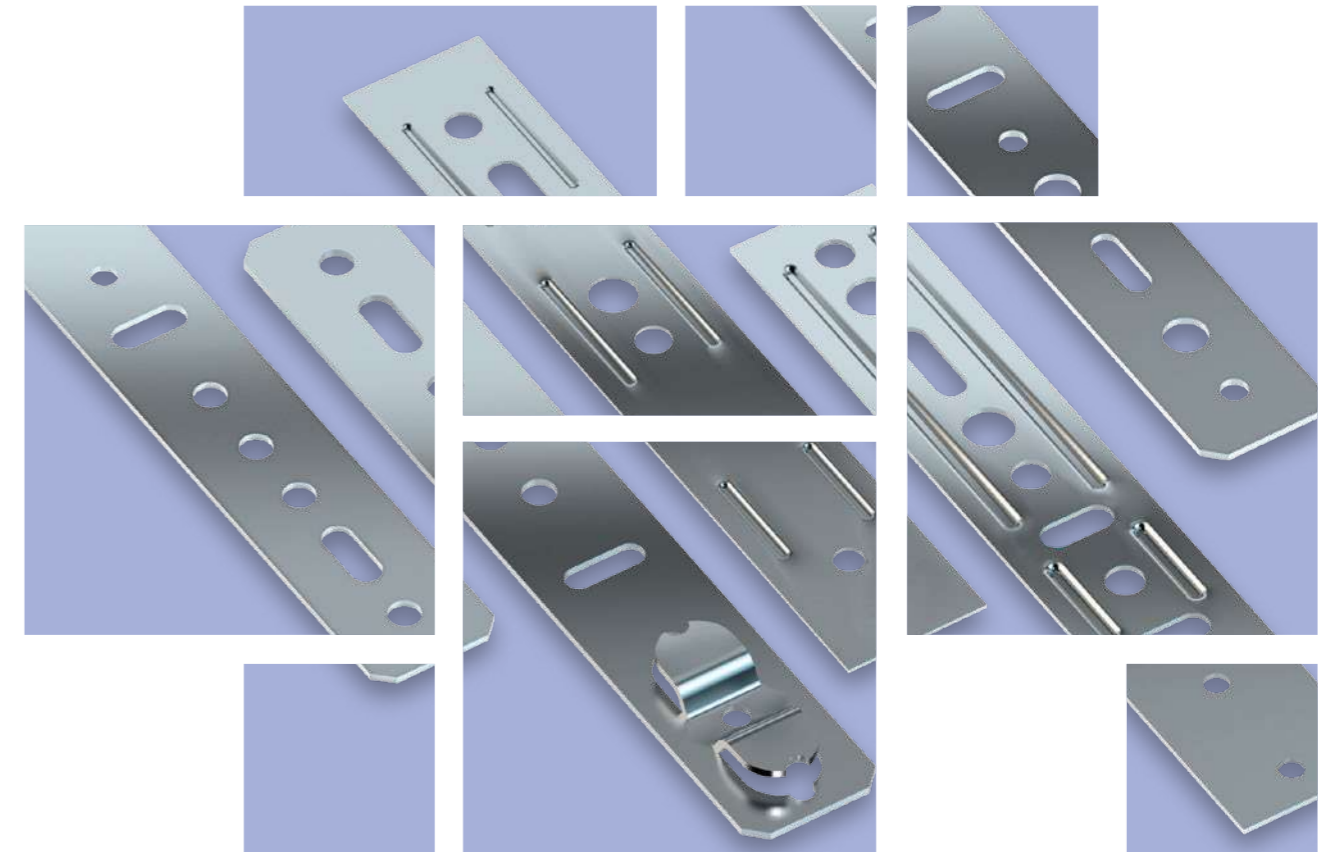


Schematic Representation			
Item (dimensions in mm)	channel 30x30x30	channel 28x28x28 (7x45-2)	channel 6x20x35x20
Compatible with window system	ALUPLAST 86110, 1 PIMAPEN 511.111	ALUPLAST 229023, 229024	BRUGMANN VS 105, PLASTMO 6505025
Schematic Representation			
Item (dimensions in mm)	channel 28x29x20	pipe 29x29	channel 27x30x27 (7x45)
Compatible with window system	DECEUNINCK, KBE 200	KBE 201, SCHUCO 202136	KBE 207
Schematic Representation			
Item (dimensions in mm)	pipe 50x40	channel 29x20x29	channel 25x25x25
Compatible with window system	KBE 229125	PIMAPEN 511.112	PIMAPEN 511.112, SCHUCO 202228

Schematic Representation			
Item (dimensions in mm)	channel 29x25x29	channel 28x35x27	pipe 30x25
Compatible with window system	PLUSTEC 304140	REHAU 244506, REHAU 244516	CHUCO 202136
Schematic Representation			
Item (dimensions in mm)	pipe 35x20	channel 25x30x25	pipe 30x20
Compatible with window system	SCHUCO 202136, SCHUCO 202446	SCHUCO 202228	SCHUCO 202446
Schematic Representation			
Item (dimensions in mm)	pipe 45x20	channel 29x38x8	channel 20x35x9
Compatible with window system	SCHUCO 202446	SCHUCO 202464	SCHUCO 202610

Schematic Representation	
Item (dimensions in mm)	channel 10x29x38x8 (7x25-1)
Compatible with window system	VEKA 113.292

# MOUNTING ANCHOR PLATE



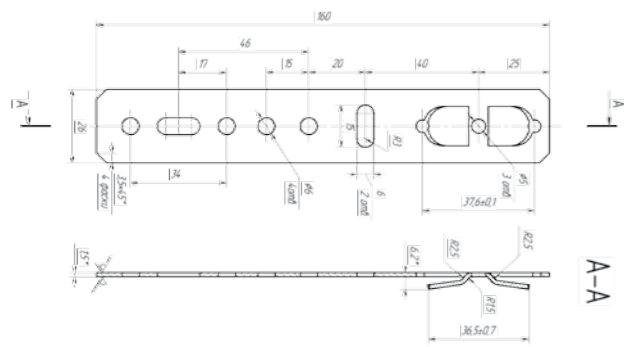
## Variant Profile SRL manufactures components for PVC window systems:

- anchor plates for all types of profile;
- Z-shaped bracket for mounting the window sill to the frame;
- parts for mounting mosquito nets on plastic windows.

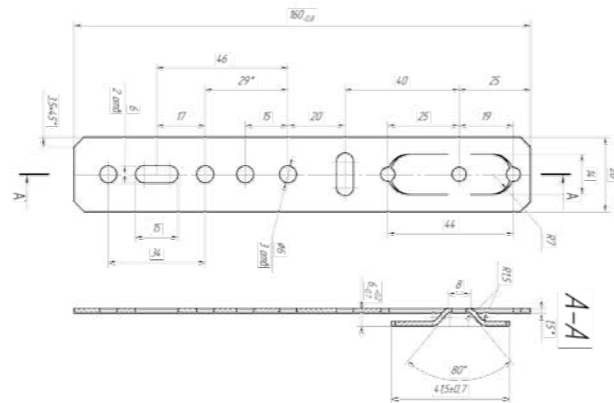
All our products are fully certified, meet the national standards, and have all the necessary documentation. When buying from us, you can be sure that you buy the products from the manufacturer first-hand.

Anchor plate is a metal mounting part used for securing PVC window or door structures. It is made of galvanized steel by punching and ranges in thickness from 0.9 to 1.5 mm.

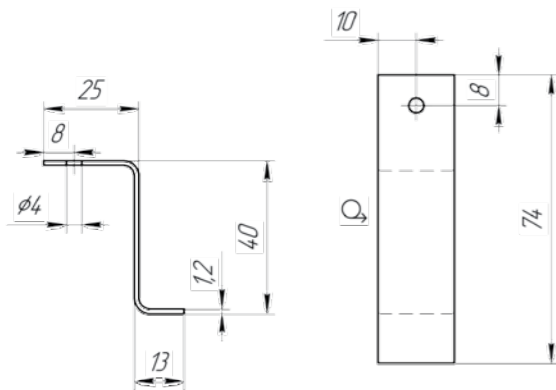




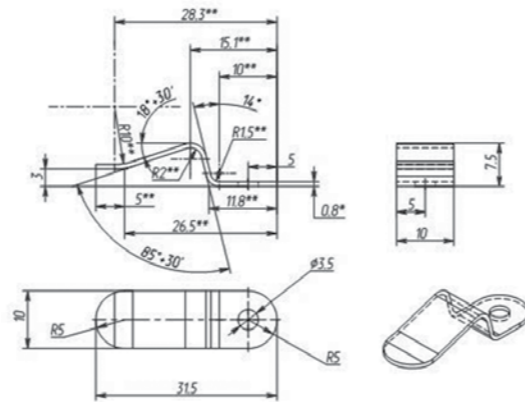
AR37.160



AR42.160

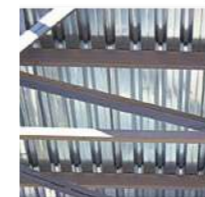
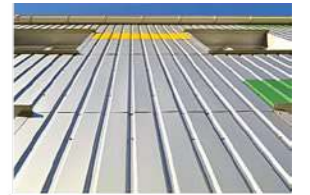


Z-shaped bracket



mounting part for installation of mosquito nets

# CORRUGATED SHEET



**Variant Profile SRL** produces wall and roofing corrugated sheets of galvanized steel and polymer coated steel.

The activity of our company is focused both on supplying building materials to trading organizations and large developers, and working with design organizations engaged in complex engineering.

**We offer:**

- roofing corrugated sheets PK 35, PK 44, PK 57, ideal for roofing of all types and sizes: both for standard pitched roofs and for roofs with a small inclination, in both industrial and private construction;

- for the construction of fences, for lining of external and internal elements of facade surfaces, we offer wall corrugated sheets PS 8, PS 10, PS 20, which even at its maximum sheet area is quite light, so that the installation of the corrugated sheet is quick and simple;
- metal thickness from 0.5 to 0.7 mm. For the budget option, 0.4 mm;
- a range of additional elements: both standard (ridges, end or barge board, eaves Accessories, snow stops, outer and inner angles, etc.), and customized Accessories.

We can make you a customized corrugated sheet with custom sizes in the shortest time according to the color you choose. All products are manufactured using modern equipment and have quality certificates. Mounting parts are manufactured in accordance with the specifications.

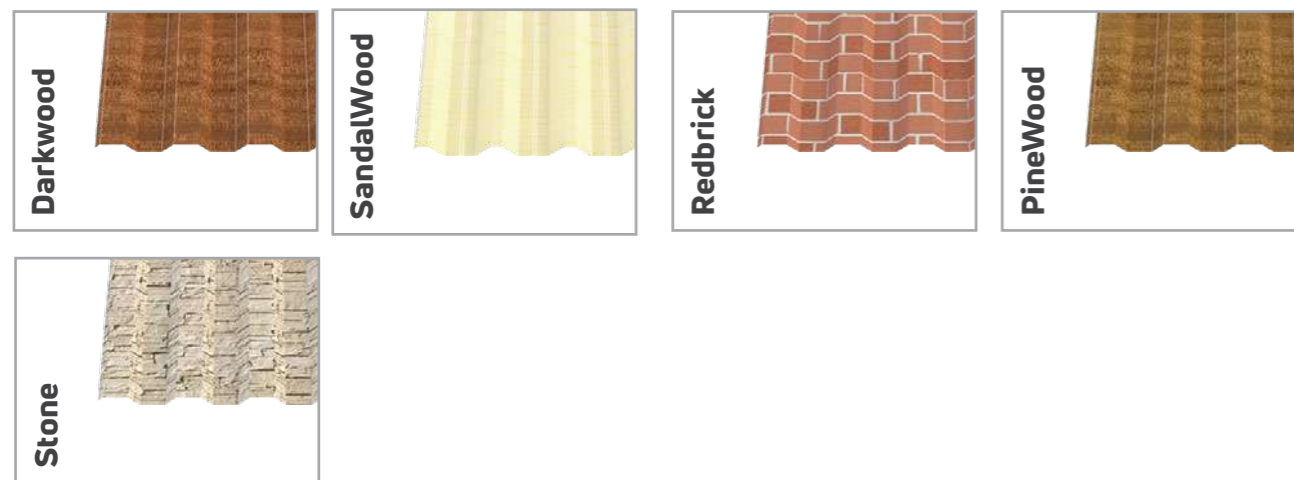
Our invaluable experience, professionalism, advanced equipment and technologies guarantee fulfillment of any non-standard ideas and wishes of our customers!

## TABLE OF STANDARD COLORS FOR POLYMER COATING\*

Polyester PE/PEMA

RAL 1015 beige	RAL 3005 wine-red	RAL 3011 cherry	RAL 5002 ultramarine blue
RAL 5005 dark blue	RAL 6005 dark green	RAL 6020 olive	RAL 7004 light gray
RAL 7024 graphite	RAL 8017 brown	RAL 8019 dark brown	RAL 9003 white
RAL 9006 white aluminum	RAL 9011 graphite black		

Decorative covering



\* Color rendering in print may differ from the actual color of the product. Production of products in non-standard colors is to be discussed individually.

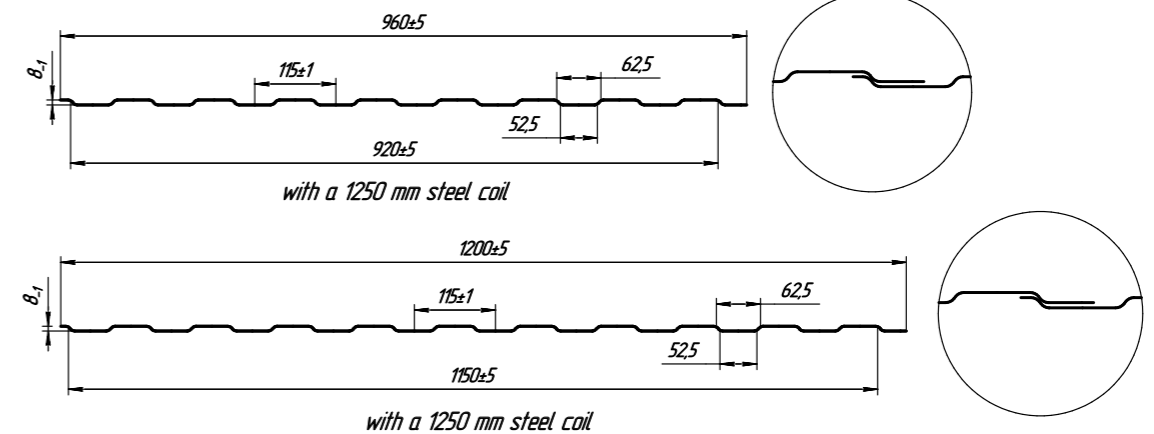
## CORRUGATED SHEET PS-8



PS-8 corrugated sheet is corrugated iron with a minimum depth of 8 millimeters, used mainly for lining of external and internal elements of facades or for the construction of fences. Even with the maximum sheet area, it is very light, which makes the installation of corrugated iron quick and convenient.

PS-8 is used for the installation of various fences (permanent and temporary), facade cladding, decoration of buildings, as well as for the installation of interior partitions.

PS-8 corrugated sheet is great for wall cladding, due to the small depth of the trapezoidal bend, it will look decent on vertical surfaces. The sheet is as light as possible and will not put unnecessary load on the building.



Total width:  
960 mm /  
1200 mm



Effective width:  
920 mm /  
1150 mm



Profile depth:  
8 mm



Metal  
thickness: 0.2  
to 0.4 mm



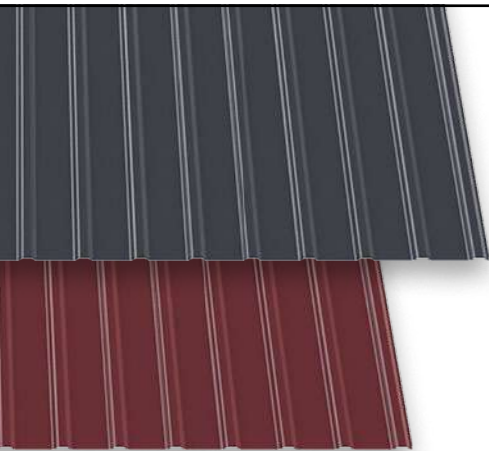
Sheet length:  
200 to  
10000 mm



Type of coating:  
galvanized,  
with polymer  
coating

Type of corrugated sheet: [wall](#)

# CORRUGATED SHEET PS/PK-10



PS/PK-10 corrugated sheet is corrugated iron with a minimum depth of 10 millimeters, used mainly for lining of external and internal elements of facades or for the construction of fences. Even with a maximum sheet area of up to 10 square meters, it is very light, making it easy and quick to install. PS-10 is wall corrugated sheet, used for lining of wooden, concrete and brick walls in the ventilated facade systems, and for the installation of enclosures and fences.

PK-10 is a roofing type of corrugated iron that can be used to cover the roof of open frame structures (sheds, gazebos, pavilions, etc.) with a small floor area. To avoid heavy loads on the structure in the form of precipitation, the angle of inclination of the roof should be sufficiently high, since the rigidity of the sheet is the smallest of the entire range.



Total width:  
950 mm / 1190 mm



Effective width:  
940 mm / 1155 mm



Profile depth:  
10 mm



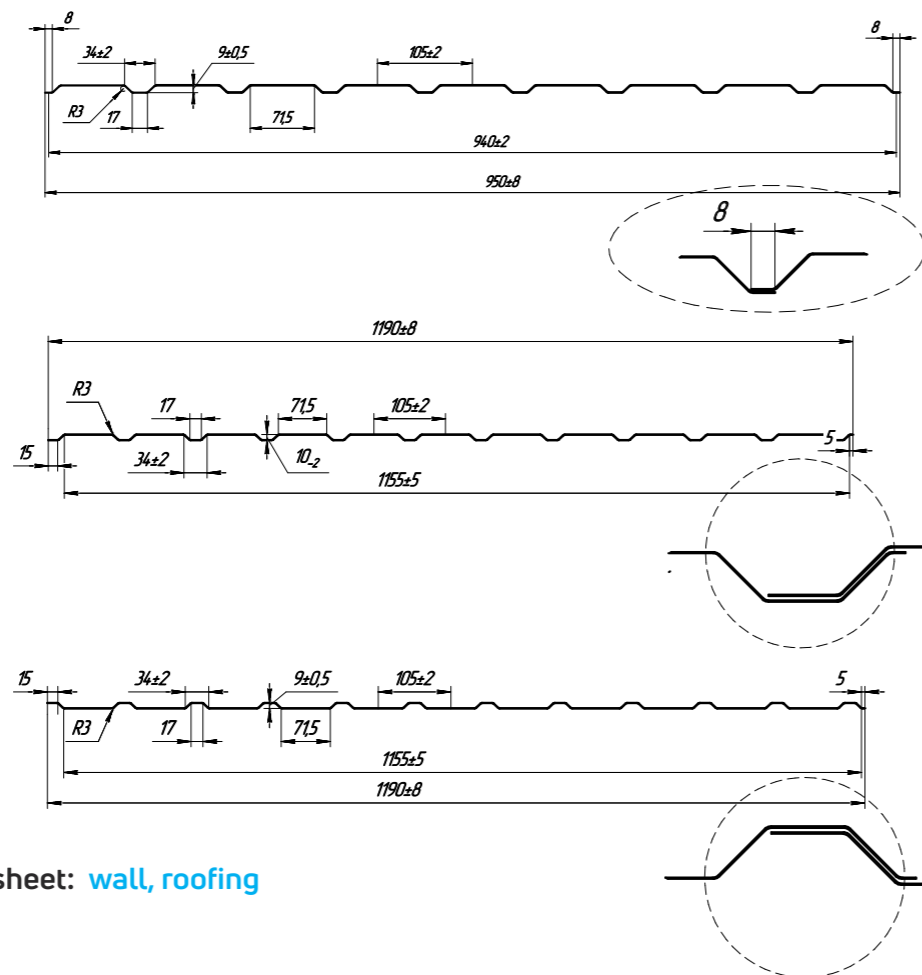
Metal thickness:  
0.2 to 0.6 mm



Sheet length:  
200 to 12000 mm



Type of coating:  
galvanized, with  
polymer coating



Type of corrugated sheet: **wall, roofing**

# CORRUGATED SHEET PS/PK-20



PS/PK-20 corrugated sheet is the most popular type of corrugated iron as a roofing material in private construction.

This corrugated iron is available in both wall and roof options. With proper installation, both in the form of wall and roof profiles, the PS/PK-20 will serve reliably and for a long time, fulfilling its functions at the highest quality.

PS-20 is wall corrugated sheet, used for erection of fences of various purpose, facade improvement of buildings of different heights (due to its trapezoidal shape, it can withstand high wind loads), decoration of wall and ceiling panels indoors, covering of eave overhangs. PK-20 is a roofing corrugated sheet, used to cover roofs of various complexity, e.g. pitched roofs, various types of structures in both the industrial and private sectors. But when using the PC-20 for roofing, you need to take into account the slope of the pitch and the spacing of the furring to secure the sheet itself.



Total width:  
910 mm / 1145 mm



Effective width:  
815 mm / 1100 mm



Profile depth:  
20 mm



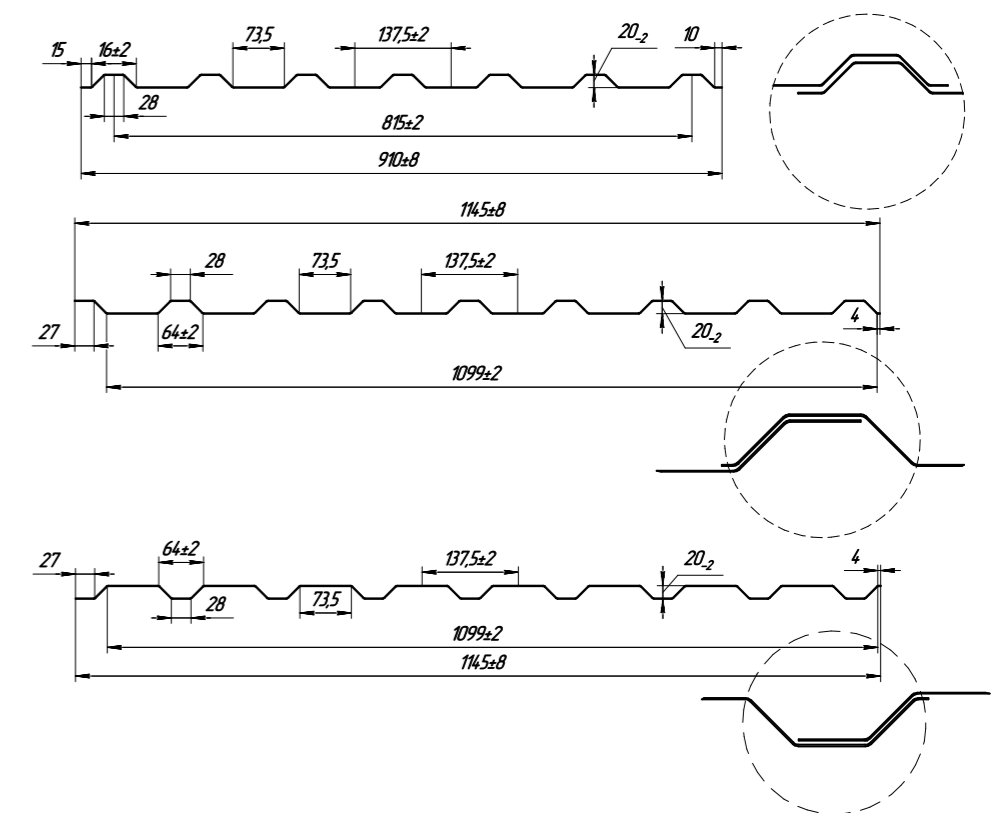
Metal thickness:  
0.2 to 0.6 mm



Sheet length:  
200 to 12000 mm

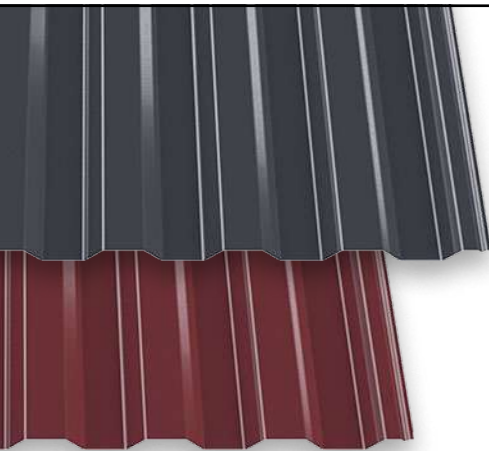


Type of coating:  
galvanized, with  
polymer coating

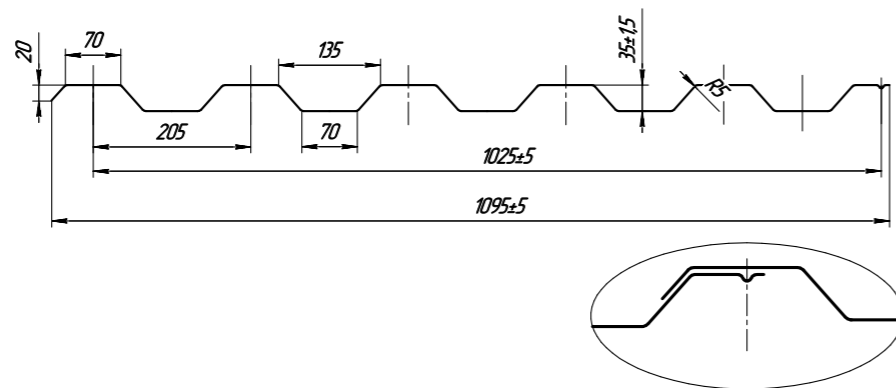


Type of corrugated sheet: **wall, roofing**

# CORRUGATED SHEET PK-35



PK-35 corrugated sheet is the universal roofing corrugated sheet for the installation of enclosing structures and roofs of all types and sizes. It is highly rigid, which provides future structures with a great level of strength under high mechanical and snow loads. The PK-35 has proven itself to be the best for lining the facades of industrial buildings and warehouses, and as corrugated iron for roofs with an inclination of 15 degrees. Due to the small depth of stiffeners, the PK-35 corrugated sheet looks good on industrial roofs as well as in the erection of roofs of cottages, summer residences and private homes. An important feature of the PK-35 is the capillary groove under the connection lock, which provides this corrugated iron the ability to be used on almost all types of buildings from business and industrial to residential and commercial, and have confidence in the reliability of the roof.



Total width:  
1095 mm



Effective width:  
1025 mm



Profile depth:  
35 mm



Metal thickness:  
0.4-0.7 mm



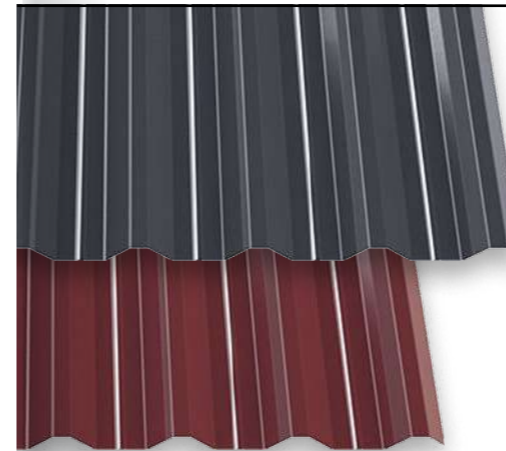
Sheet length:  
500 to  
12000 mm



Type of coating:  
galvanized, with  
polymer coating

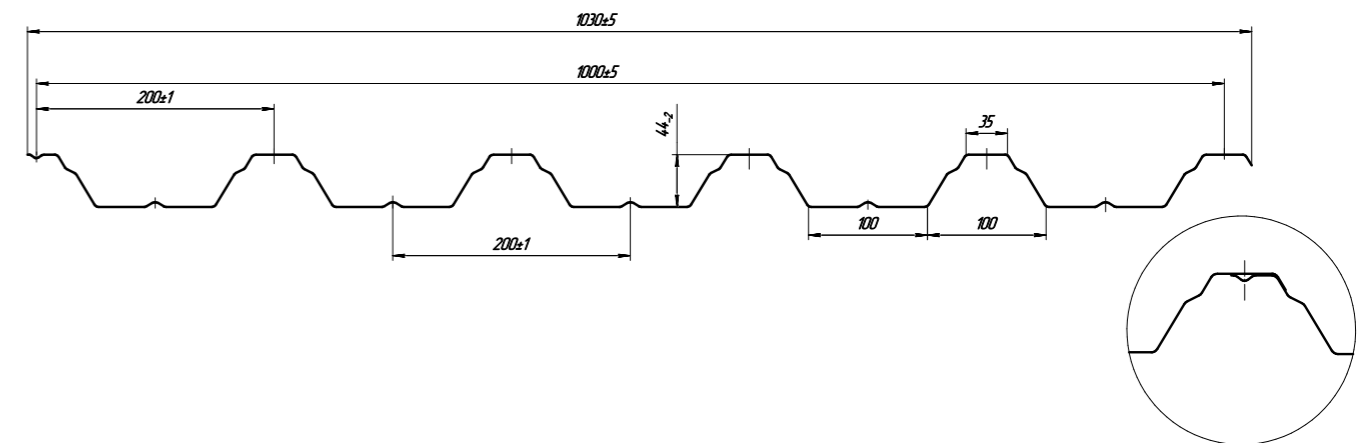
Type of corrugated sheet: **roofing, universal**

# CORRUGATED SHEET PK-44



The PK-44 corrugated sheet is a roofing corrugated iron used in industrial construction in case of increased surface durability requirements. It has improved rigidity and leakage characteristics thanks to its 44 mm profile height and is used for roofing of large roofs in all areas of construction. Also suitable for roofs with a small roof inclination down to 9 degrees. The PK-44 can be used as a permanent formwork when concreting the floors or for filling the foundation.

In recent years, roofing corrugated iron is also actively used in the private construction of low-rise buildings, shops, booths. This is due to the use of polymer coated steel, which greatly increased the aesthetic appeal and added greater aesthetics of the corrugated iron.



Total width:  
1030 mm



Effective width:  
1050 mm



Profile depth:  
44 mm



Metal thickness:  
0.4 to 0.8 mm



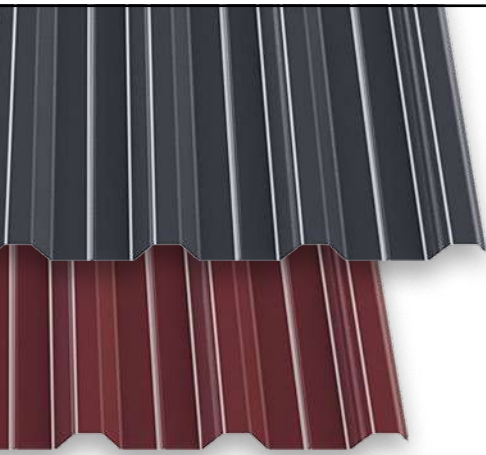
Sheet length:  
500 to  
12000 mm



Type of coating:  
galvanized, with  
polymer coating

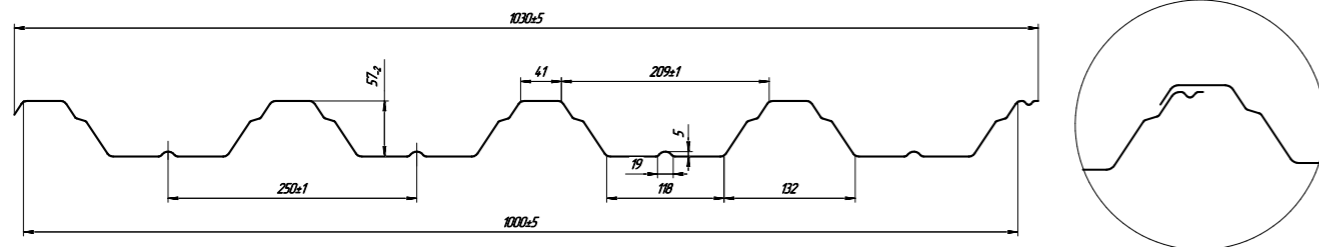
Type of corrugated sheet: **roofing, load-bearing**

# CORRUGATED SHEET PK-57



This type of corrugated iron can be used for both ordinary pitched and low-slope roofs. It can be used at small inclination angles, because it has a capillary groove under the connecting lock, and it also has a large bearing capacity, so when properly mounted, it will cope perfectly with any snow and wind loads. The PK-57 corrugated sheet is used for wall and panel fences, floors with large spans (up to three meters), and as a fixed formwork in monolithic frame construction.

It is the most commonly used corrugated iron in steel designs of metal buildings and metal frames for any climatic zones. Made of high-quality rolled metal, the load-bearing PC-57 roofing corrugated sheet of galvanized steel will be an indispensable aid both for creating intermediate floors and for creating load-bearing walls of buildings that have no (or minimal) additional metal structures. Without the use of the PC-57, it is impossible to imagine the construction of prefabricated structures: it has excellent indices when it comes to the difference between full and effective width, and also the lock is quite reliable and will not create any additional problems during installation.



**Total width:**  
1030 mm



**Effective width:**  
1000 mm



**Profile depth:**  
57 mm



**Metal thickness:**  
0.4 to 0.8 mm



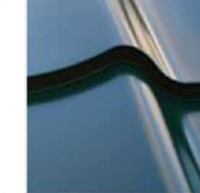
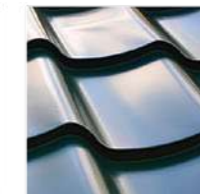
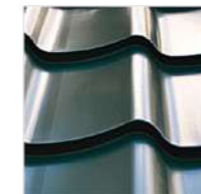
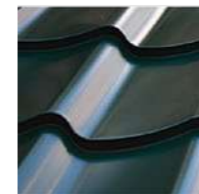
**Sheet length:**  
500 to 12000 mm



**Type of coating:**  
galvanized, with polymer coating

Type of corrugated sheet: **roofing, load-bearing**

# STEEL TILE



**Variant Profile SRL** produces a durable, cost-effective, and strong Industry Steel Tile that remains popular among roofing materials for private, commercial and industrial construction.

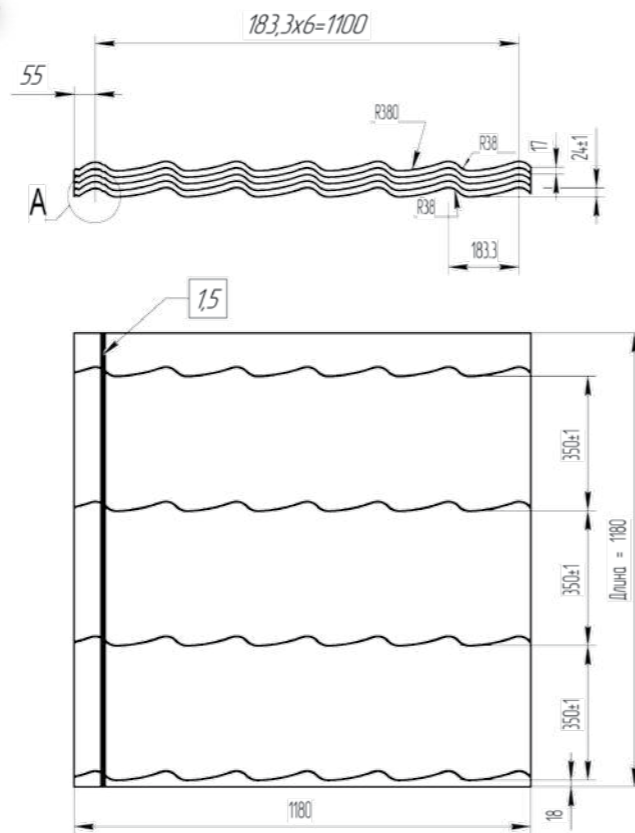
## Advantages of Industry Steel Tile:

- Classic Mediterranean style that looks harmoniously with any design of the facility. The traditional form of Industry Steel Tile is a versatile solution for the construction of a separate structure, as well as for the construction of additional buildings close to the existing ones.
- Rolling is carried out on new modern equipment, which guarantees equal geometric indices of each sheet and simplifies installation.
- The double capillary groove is a reliable insurance against leakage through the lateral joints of sheets, even in the event of storm gusts of wind and rain.
- Extra stamping of the transverse rib provides the density of connection of the ridge of the upper sheet with the previous one when laying the metal in two or more rows and gives attractiveness to the whole area of the roof.

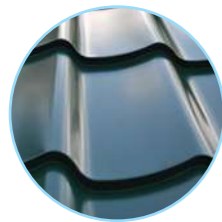
- Execution of custom-made sheets according to the customer's request and professional calculation of the required quantity and parameters of Steel Tile by our specialists at the request of the client.

Industry Steel Tile is a cost-effective, fast and easy-to-install roofing solution. The sheets are made of galvanized steel covered with a protective layer of polymer coating of various colors and textures, with a relatively small weight. All these parameters provide for a long service life. Industry Steel Tile will be a successful acquisition, which for many years will properly and reliably protect the roof from rain, wind, etc. The unmatched appearance of Industry Steel Tile will highlight the exterior of a cozy home, commercial building, or industrial facility.

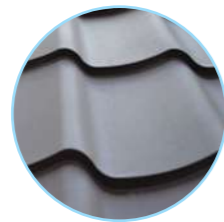
# STEEL TILE



For protection against corrosion and mechanical destruction, sheet of Steel Tile is covered with a layer of polyester, which can be matte or glossy:



Glossy Polyester PE: coating with a thickness of 25 microns, consisting of resistant polyester paint.



Matte Polyester REMA: coating with a thickness of 35 microns, more resistant to weather fluctuations and fading.



Total sheet width: 1180 mm



Effective sheet width: 1100 mm



Profile depth: 25 mm



Metal thickness: 0.4, 0.45, 0.5 mm



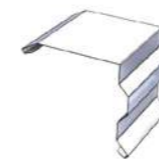
Sheet length: 480 to 6000 mm



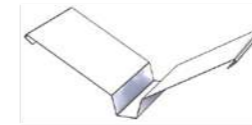
Furring step of Steel Tile: 350 mm

**Mounting parts:** galvanized self-tapping screw with polymer coating and 4.8x35 press washer; 4.8x19

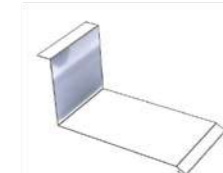
# ACCESSORIES FOR INSTALLATION OF CORRUGATED SHEET AND STEEL TILE



End Element



Valley Element



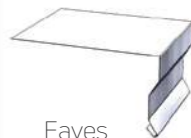
Step Element



Straight Ridge Element



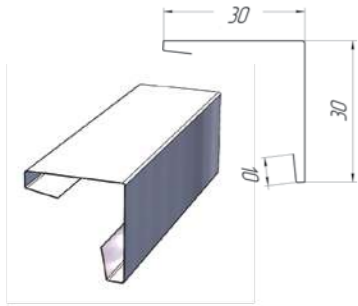
Snow Stop



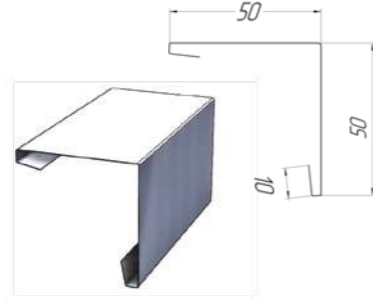
Eaves Element



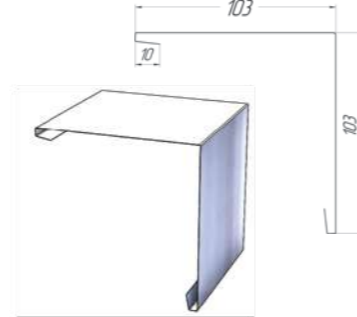
**OUTSIDE CORNER ELEMENT  
30X30**



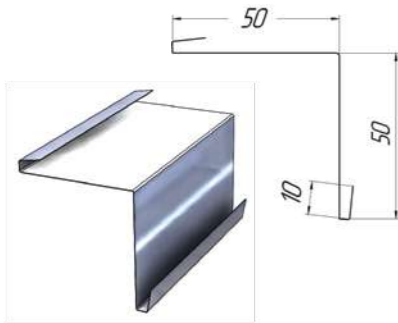
**OUTSIDE CORNER ELEMENT  
50X50**



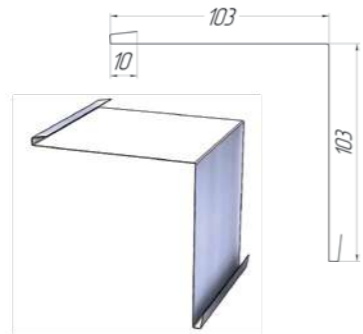
**OUTSIDE CORNER ELEMENT  
103X103**



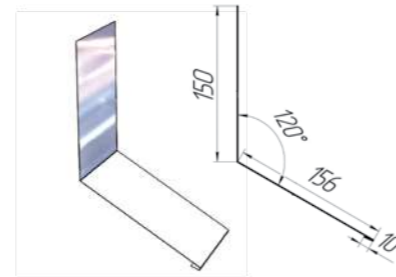
**INSIDE CORNER ELEMENT  
50X50**



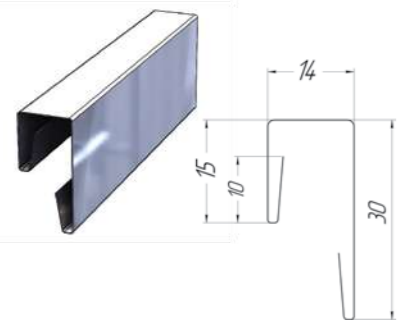
**INSIDE CORNER ELEMENT  
103X103**



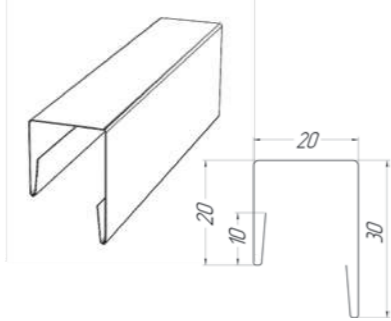
**S-1 WALL ELEMENT**



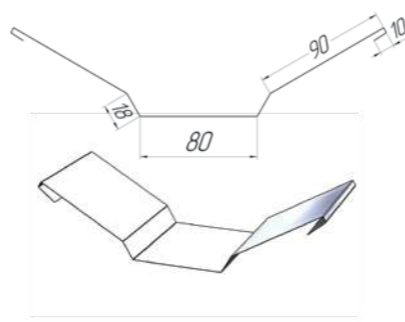
**END FENCE ELEMENT  
FOR PS 10**



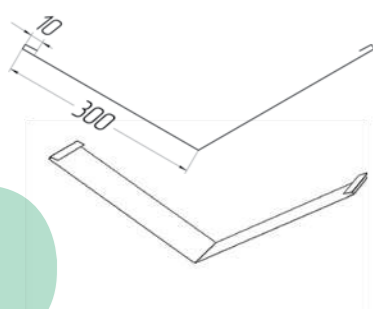
**END FENCE ELEMENT  
FOR PS 20**



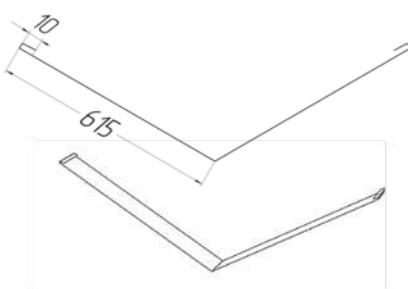
**INSIDE JOINT ELEMENT  
PVS-01**



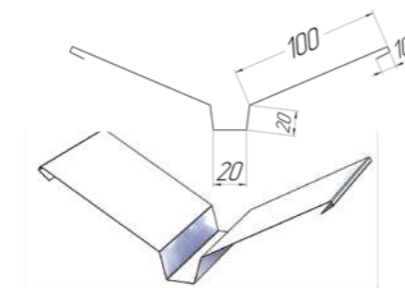
**VALLEY ELEMENT E1**



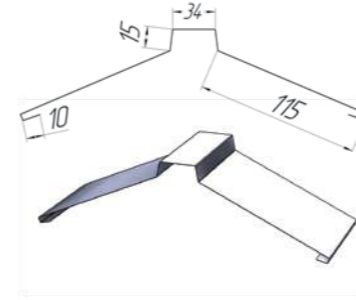
**VALLEY ELEMENT E2**



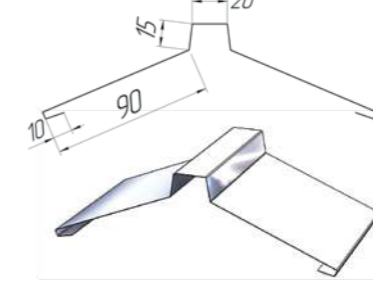
**VALLEY ELEMENT E6**



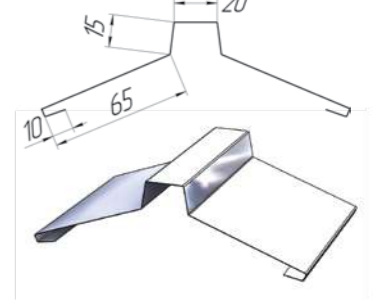
**DIRECT RIDGE ELEMENT  
RIDGE K-1**



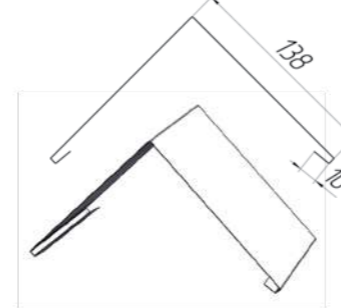
**DIRECT RIDGE ELEMENT  
RIDGE K-2**



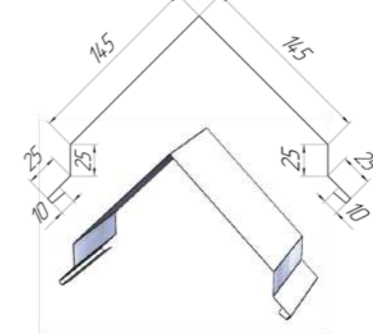
**DIRECT RIDGE ELEMENT  
RIDGE K-3**



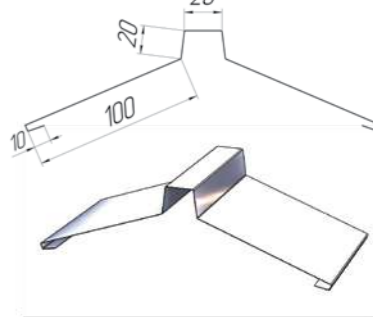
**DIRECT RIDGE ELEMENT  
RIDGE K-4**



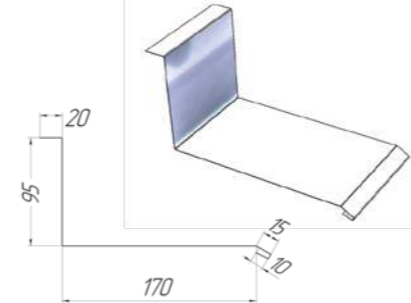
**DIRECT RIDGE ELEMENT  
RIDGE K-5**



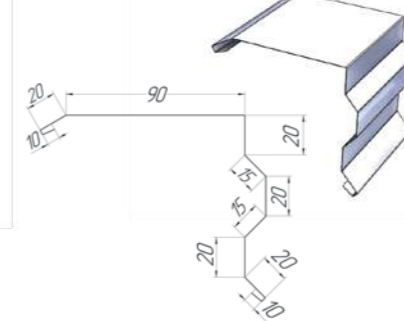
**DIRECT RIDGE ELEMENT  
RIDGE K-6**



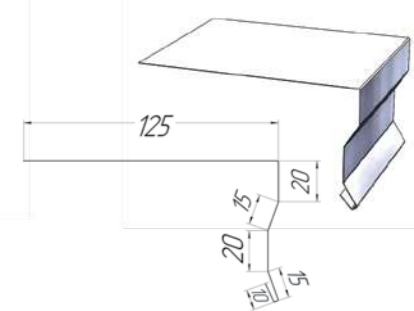
**JOINT  
ELEMENT PS**



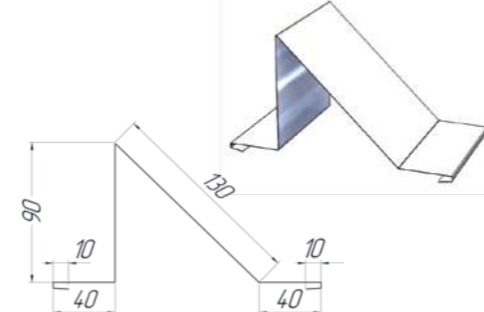
**END ELEMENT  
TP-1**



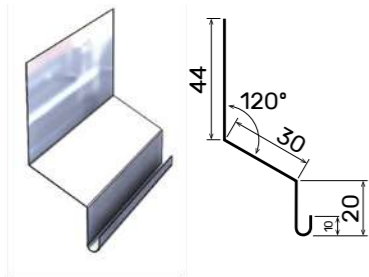
**EAVES ELEMENT  
TP-2**



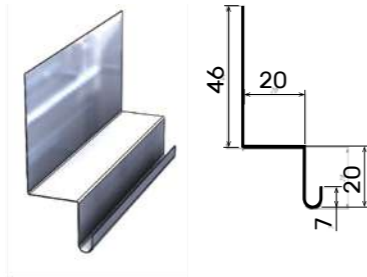
**SNOW STOP**



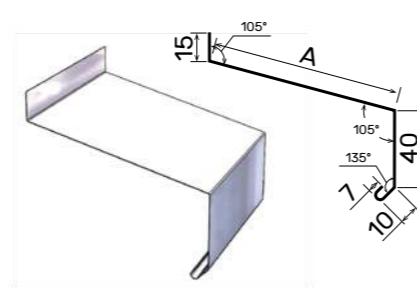
**ELEMENT FOR PV1  
LEVELING**



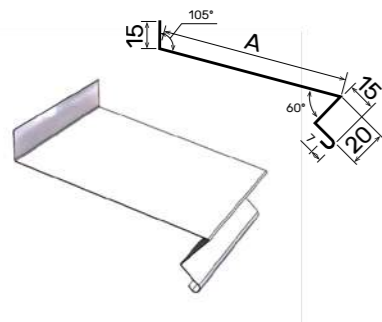
**ELEMENT FOR PV2  
LEVELING**



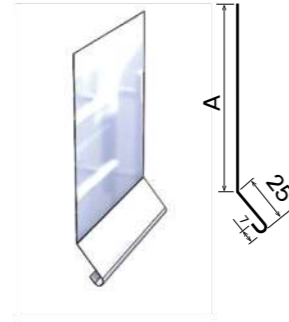
**WINDOW SILL ELEMENT  
ZP1**



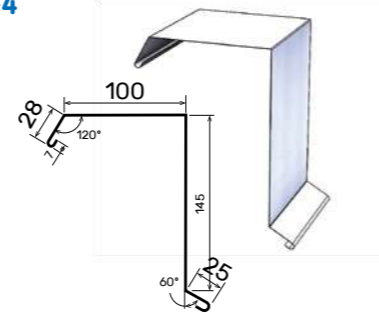
**WINDOW SILL ELEMENT  
ZP2**



**UNIVERSAL APRON  
ELEMENT PZU**



**END ELEMENT  
TP-4**



It is part of a manufacturing corporation of 12 companies worldwide engaged in metal processing and manufacturing equipment for its processing.



Headquarters and production facilities are located in Targu Jiu, Romania.



The production company started its activity in 2023.



Production capacity is more than 20,000 tons of metal per year worldwide.



200 highly skilled employees in the state, high design potential of our own engineering bureau.



High-tech production with quality control system.



More than 20 years of experience in metalworking, an impeccable reputation both in Romania and abroad.



## **Variant Profile SRL**

str. Tismana 1A, Targu Jiu, Gorj, Romania

<https://www.variant-profile.com>

[office@variant-profile.com](mailto:office@variant-profile.com)

+40 742 551 111



str. Tismana 1A, Targu Jiu, Gorj, Romania  
<https://www.variant-profile.com>  
[office@variant-profile.com](mailto:office@variant-profile.com)  
+40 742 551 111